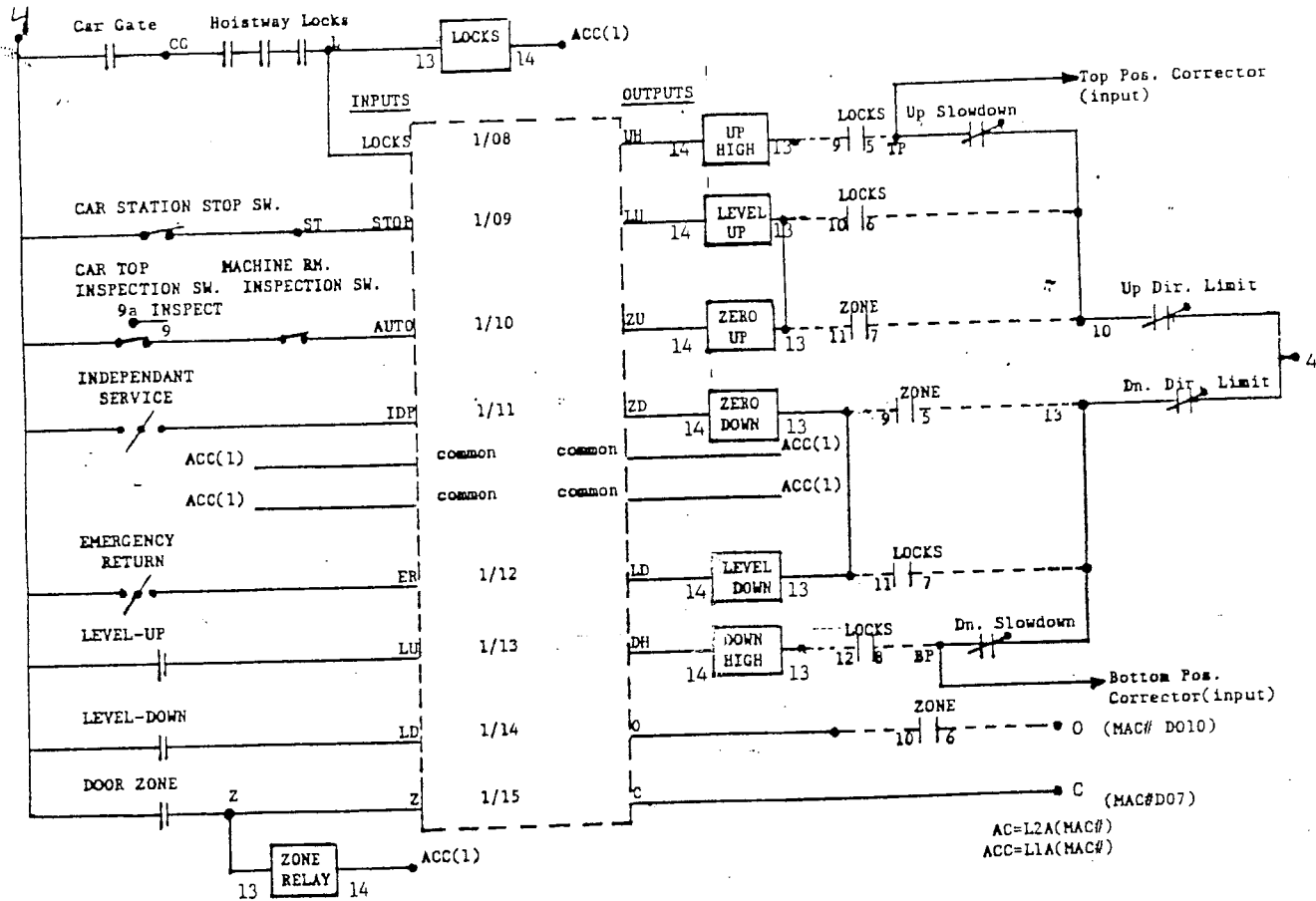
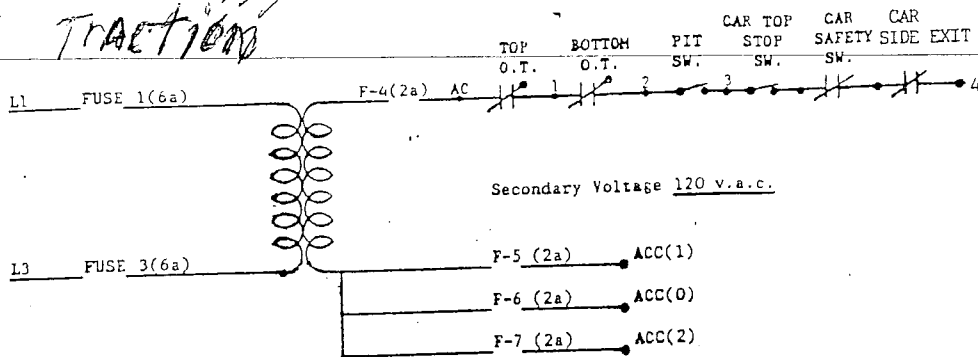


*Dirvel-Biss
Traction*



NOTE 1: When replacing the main CENTRAL PROCESSING UNIT BOARD (CPU), the factory jumper from 2716 to A-11 must be removed and a new jumper must be installed from A-11 to 2732. Also, the jumper from G to B must be removed and a new jumper must be installed from B to 3.

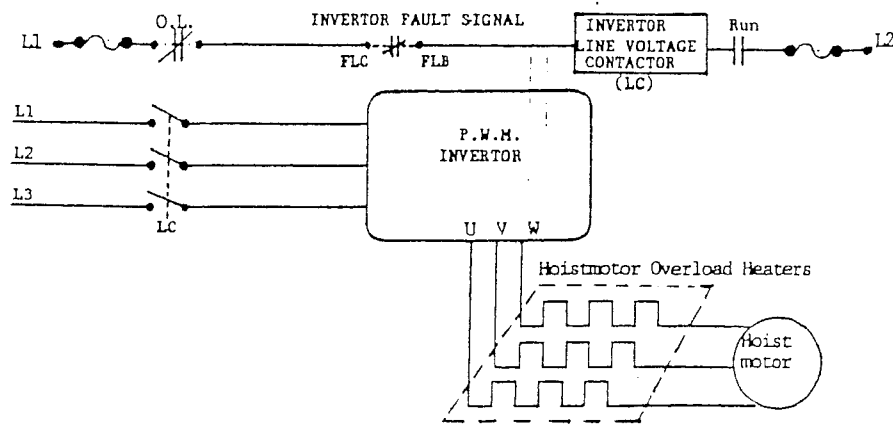
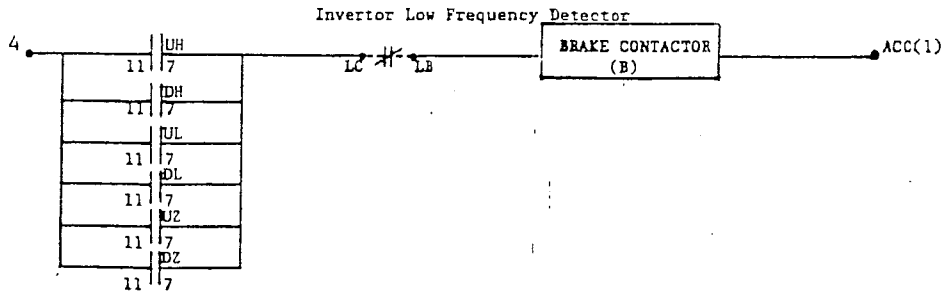
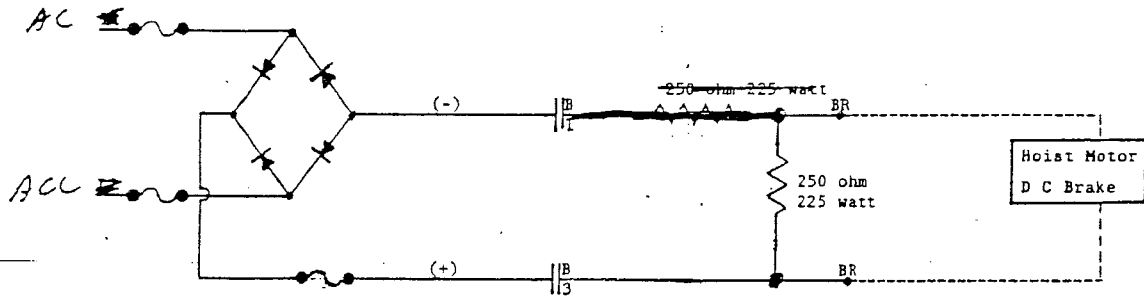
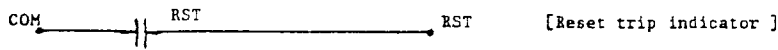
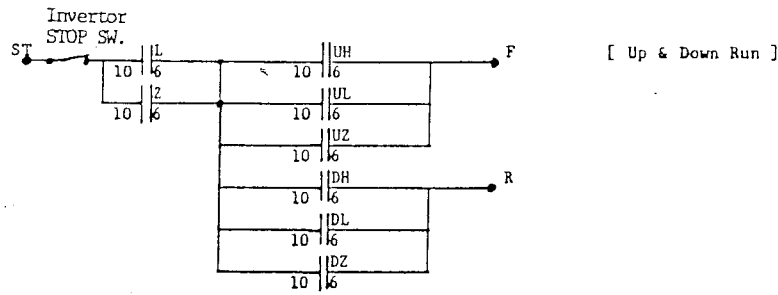
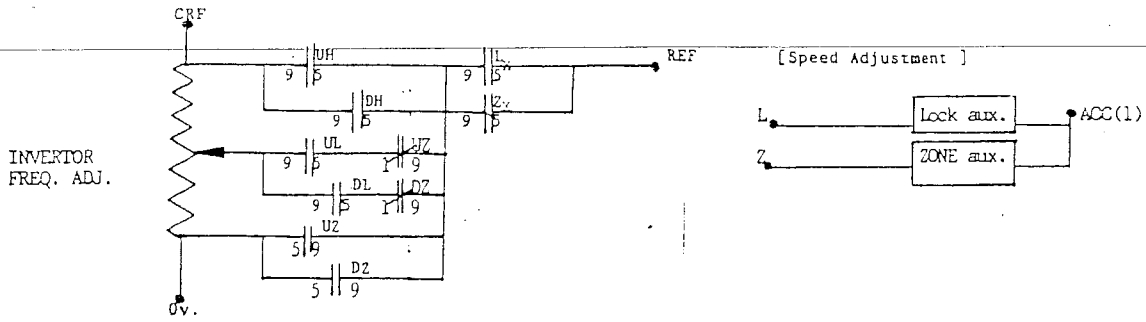
NOTE 2: When replacing an EXPANDER BOARD, the PAGE BIT TABLES must be used to have the proper communication between the CPU and the inputs and outputs on the EXPANDER BOARDS.

PAGE	PAGE BIT		
	1	2	4
0	x	x	x
1	do not use		
2	x	o	x
3	o	o	x
4	x	x	o
5	o	x	o
6	x	o	o
7	o	o	o

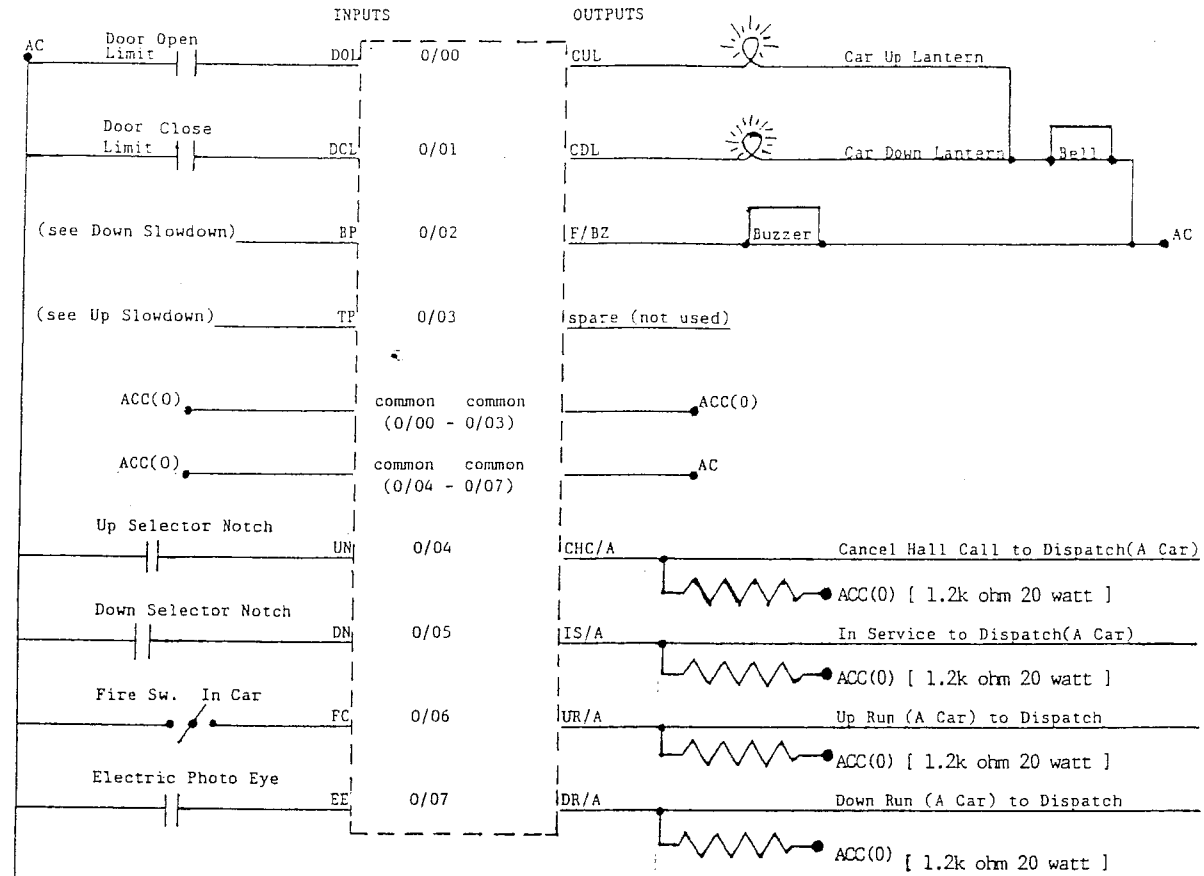
JUMPER	I/O BIT	
	UPPER	LOWER
LOWER	o	x
UPPER	x	o

X = JUMPER
O = NO JUMPER
UPPER IS 8-15
LOWER IS 0-7

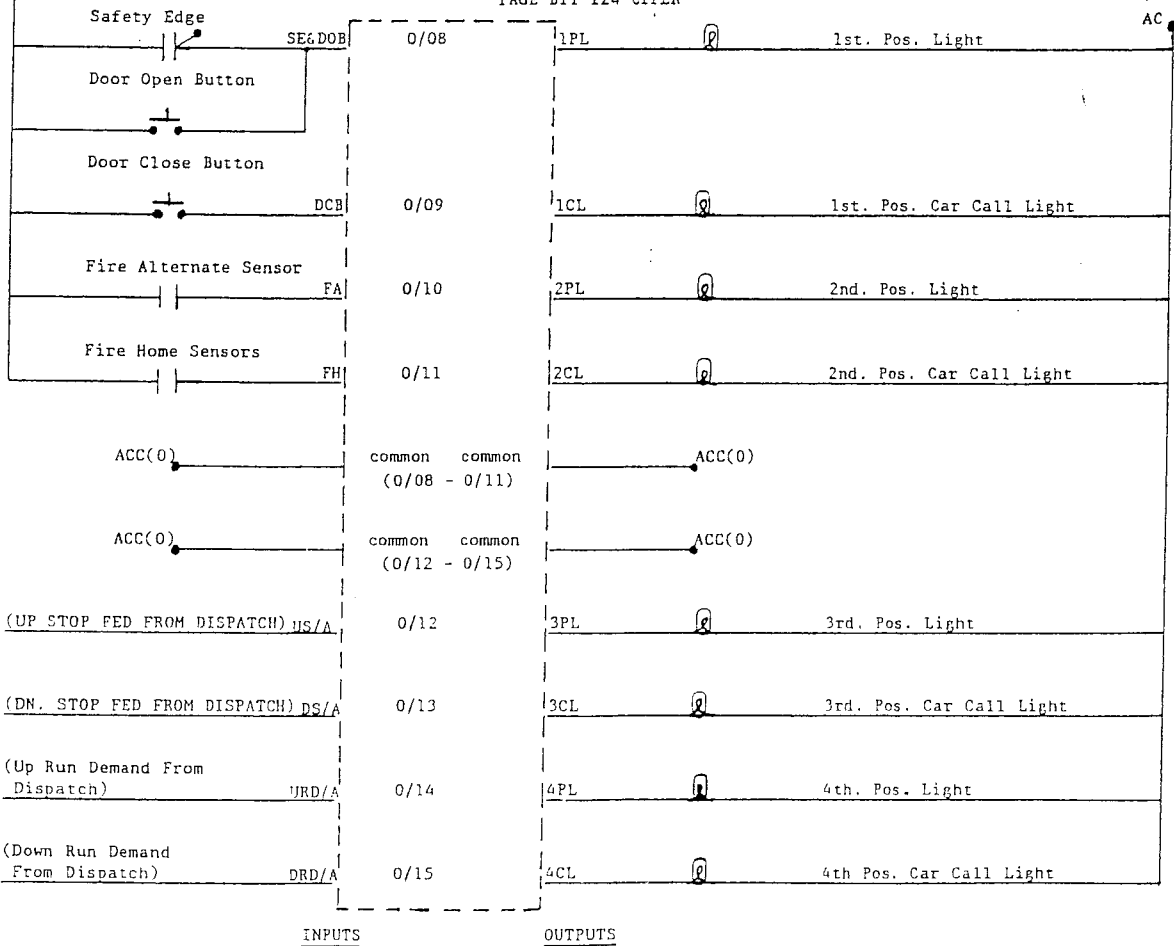
*UNLAWFUL TO COPY



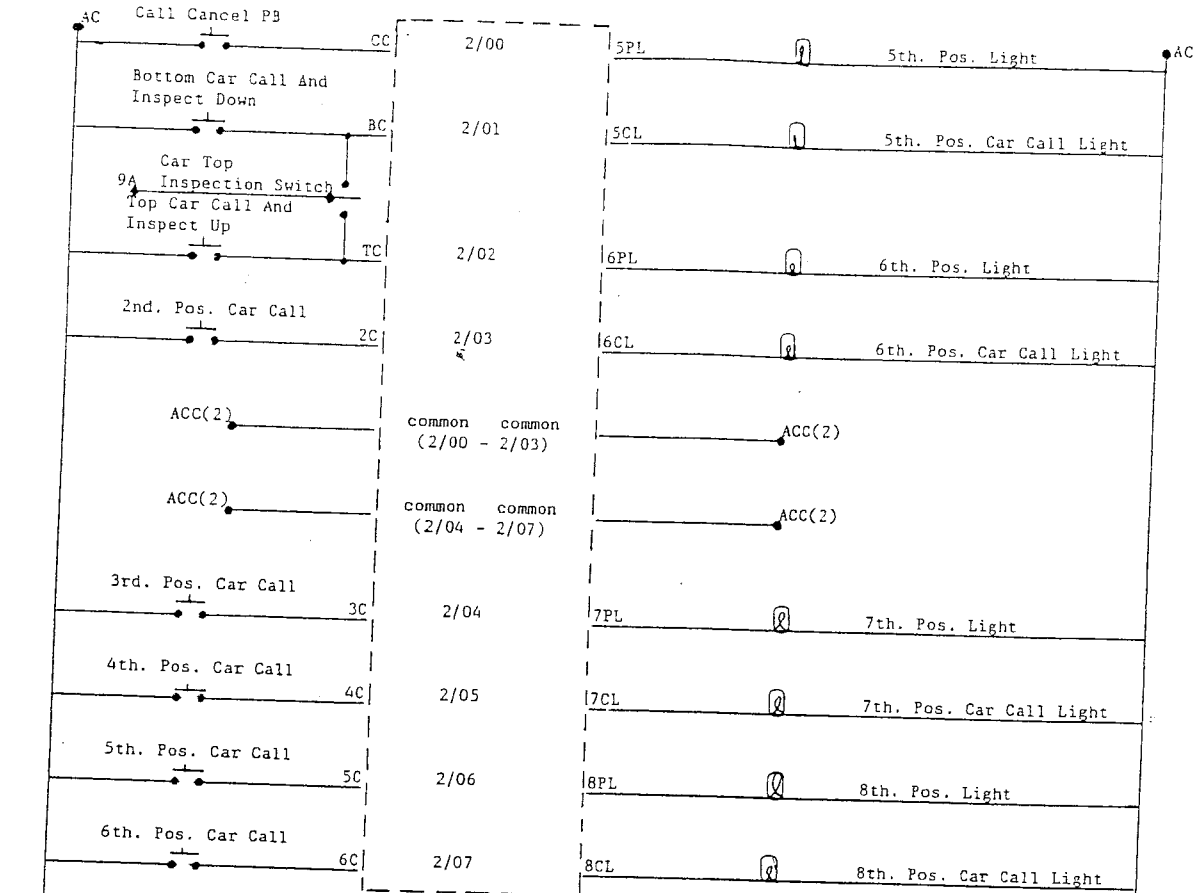
PAGE BIT 124 LOWER



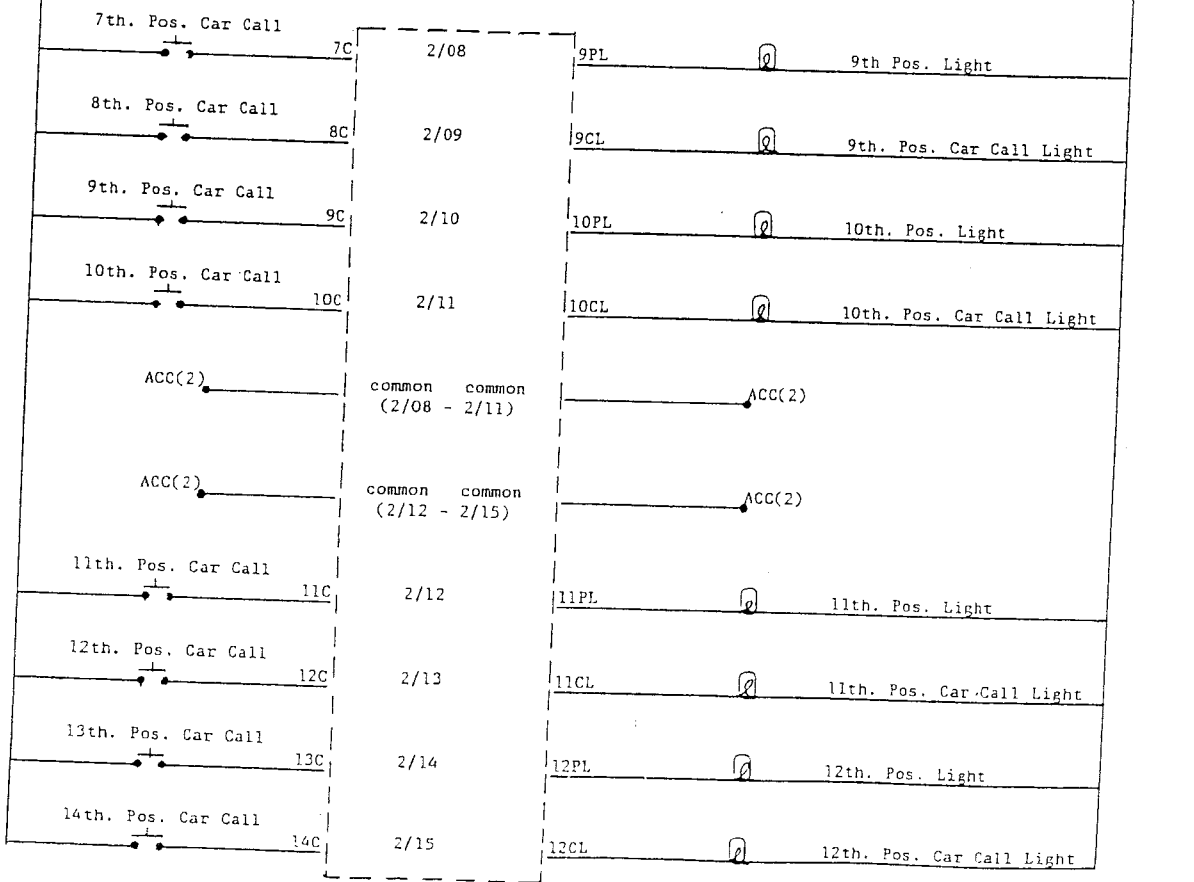
PAGE BIT 124 UPPER



PAGE BIT 1 - 4 LOWER



PAGE BIT 1 - 4 UPPER



	INPUT		OUTPUT	
Bottom Position Reset (from A car bottom slowdown)	BP/A	1/08	URD/A	Up Run Demand A Car (to A car input 0/14-URD/A)
Top Position Reset (from A car top slowdown)	TP/A	1/09	DRD/A	Down Run Demand A Car (to A car input 0/15-DRD/A)
Up Selector Notch (from A Car selector)	UN/A	1/10	US/A	Up Stop A Car (to A car input 0/12-US/A)
Down Selector Notch (from A Car selector)	DN/A	1/11	DS/A	Down Stop A Car (to A Car input 0/13-DS/A)
ACC(1) (fed from A car)(feeds inputs 1/08-1/11)	Common		Common	AC(1) (fed from A car)(feeds outputs 1/08-1/11)
ACC(1) (fed from A car)(feeds inputs 1/12-1/15)	Common		Common	NOT USED
In service A Car (fed from A Car output 0/05-IS/A)	IS/A	1/12	3PL	3rd. position monitor (A Car)
Cancel Hall Call A Car (fed from A Car output 0/04-CHC/A)	CHC/A	1/13	6PL	6th. position monitor (A Car)
Up Running A Car (fed from A Car output 0/06-UR/A)	UR/A	1/14	9PL	9th. position monitor (A Car)
Down Running A Car (fed from A Car output 0/07-DR/A)	DR/A	1/15		

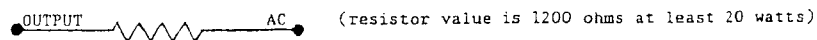
PAGE BIT 124 LOWER

Bottom Position Reset (from B car bottom slowdown)	BP/B	0/00	URD/B	Up Run Demand B Car (to B car input 0/14-URD/B)
Top Position Reset (from B car top slowdown)	TP/B	0/01	DRD/B	Down Run Demand B Car (to B car input 0/15-DRD/B)
Up Selector Notch (from B car selector)	UN/B	0/02	US/B	Up Stop B car (to B car input 0/12-US/B)
Down Selector Notch (from B car selector)	DN/B	0/03	DS/B	Down Stop B Car (to B car input 0/13-DS/B)
ACC(1) (fed from B car)(feeds inputs 0/00-0/03)	Common		Common	AC(1) (fed from B car)(feeds outputs /00- /03)
ACC(1) (fed from B car)(feeds inputs 0/04-0/07)	Common		Common	NOT USED
In Service B Car (fed from B car output 0/05-IS/B)	IS/B	0/04	3PL	3rd. position monitor (B Car)
Cancel Hall Call B Car (fed from B car output 0/04-CHC/B)	CHC/B	0/05	6PL	6th. position monitor (B Car)
Up Running B Car (fed from B car output 0/06-UR/B)	UR/B	0/06	9PL	9th. position monitor (B Car)
Down Running B Car (fed from B car output 0/07-DR/B)	DR/B	0/07		

PLEASE READ VERY IMPORTANT!!!!!!!!!!!!!!

When feeding an input with an output a LOAD RESISTOR must be used at the output as the below circuit indicates.

Circuit used when the Common for the output, that feeds an input, originates from ACC.



Circuit used when the Common for the output, that feeds an input, originates from AC.

