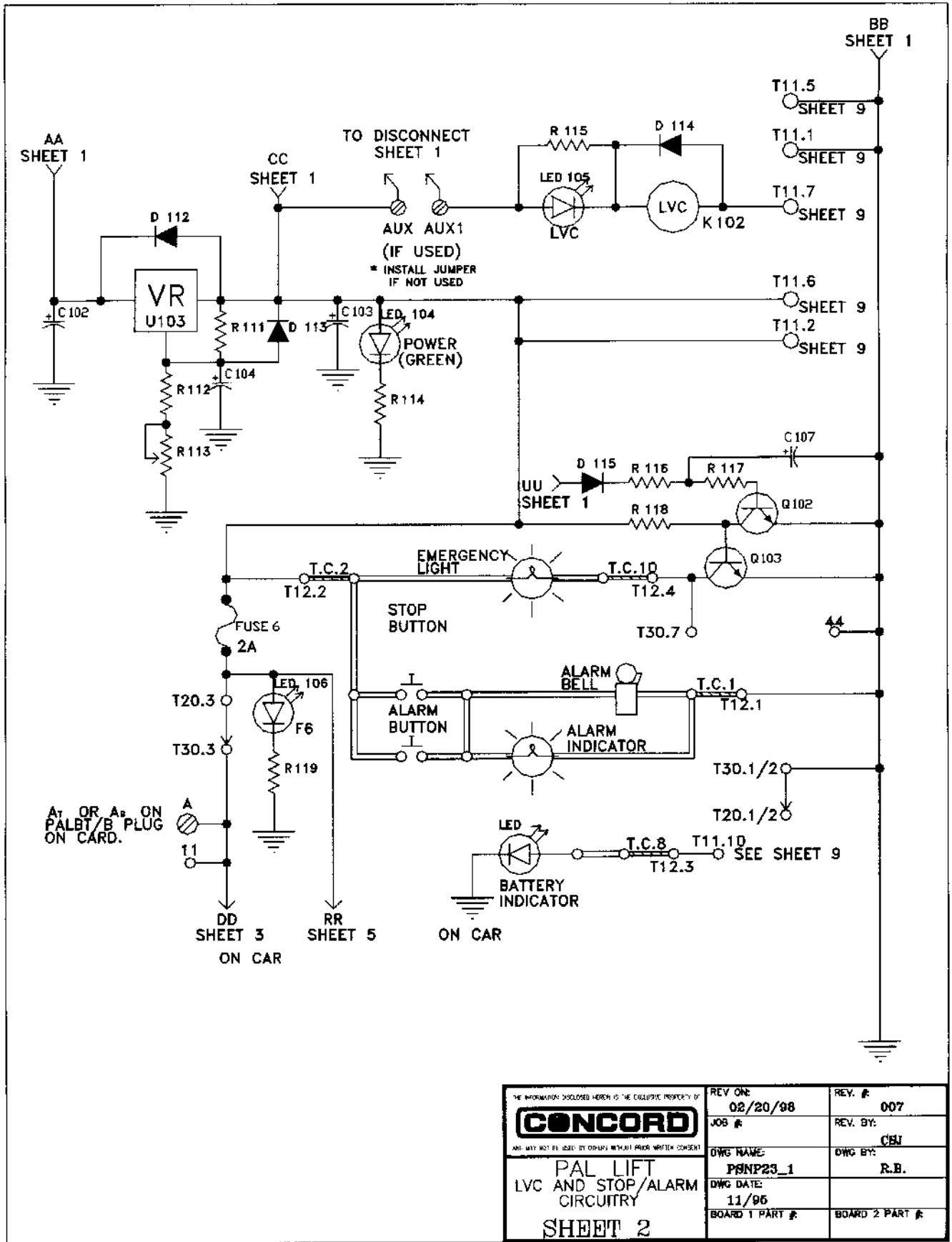


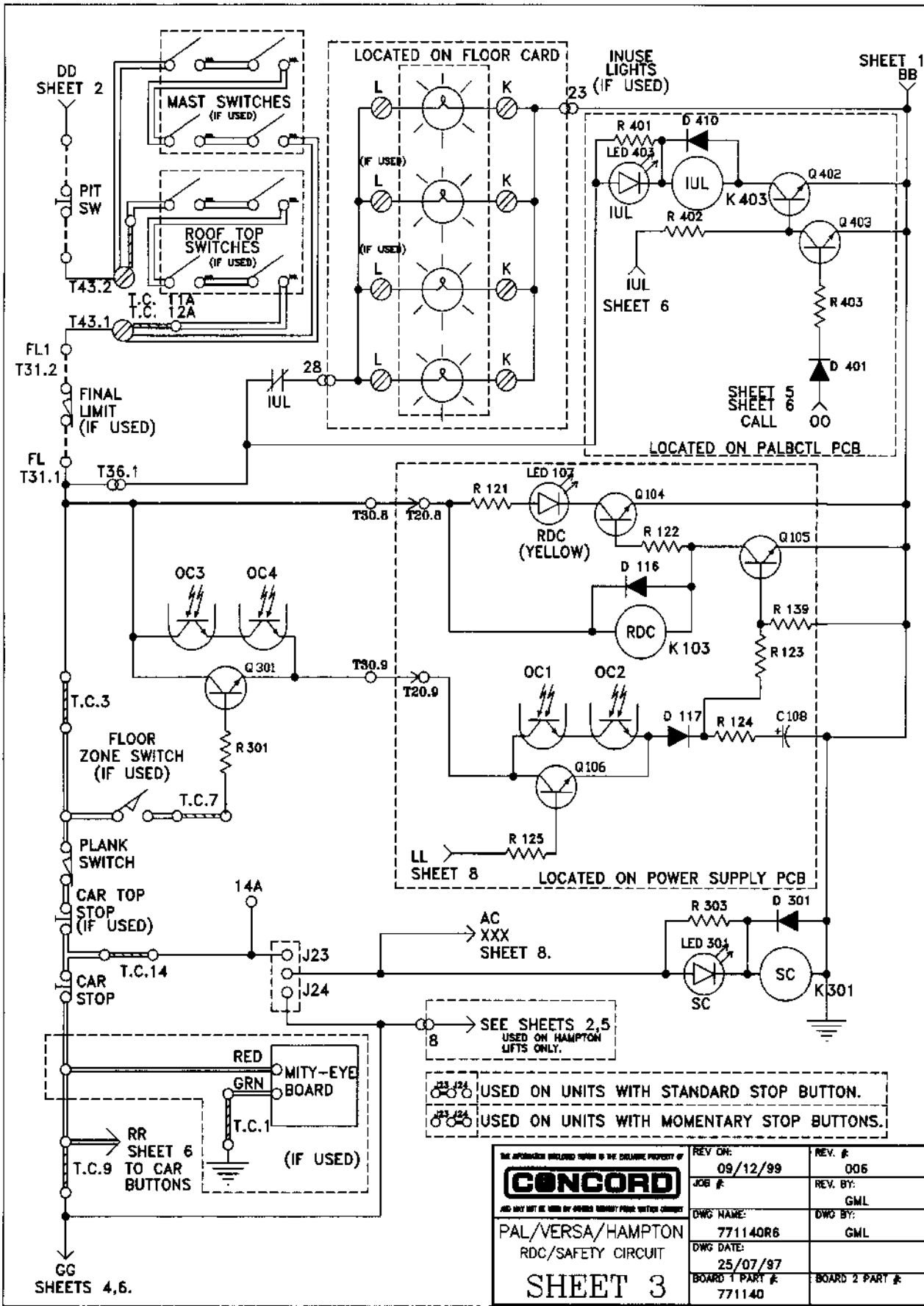
* DENOTES CHASSIS MOUNT DIODES

THE INFORMATION REPRODUCED HEREIN IS THE EXCLUSIVE PROPERTY OF CONCORD AND MAY NOT BE USED BY OTHERS WITHOUT WRITTEN CONSENT PAL-LIFT FUSE AND MOTOR CIRCUITRY 220V (INTERNATIONAL) 24V PUMP MOTOR SHEET 1.11	REV ON: 02/20/98	REV. #: 011
	JOB #:	REV. BY: CSJ
	DWG NAME: PSNPP1N	DWG BY: RB
	DWG DATE: 09/25/98	
	BOARD 1 PART #: 771137 REV001	BOARD 2 PART #:

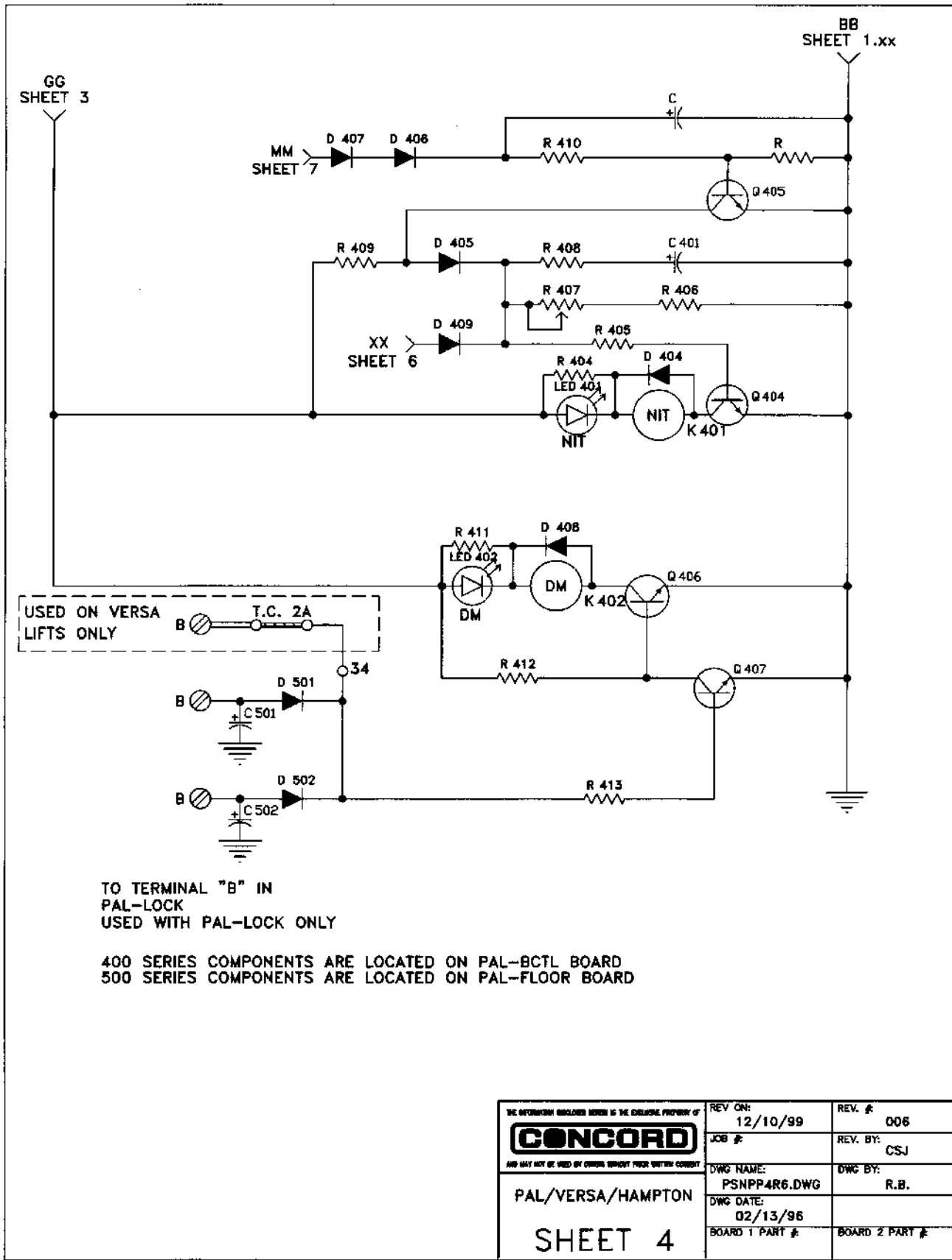


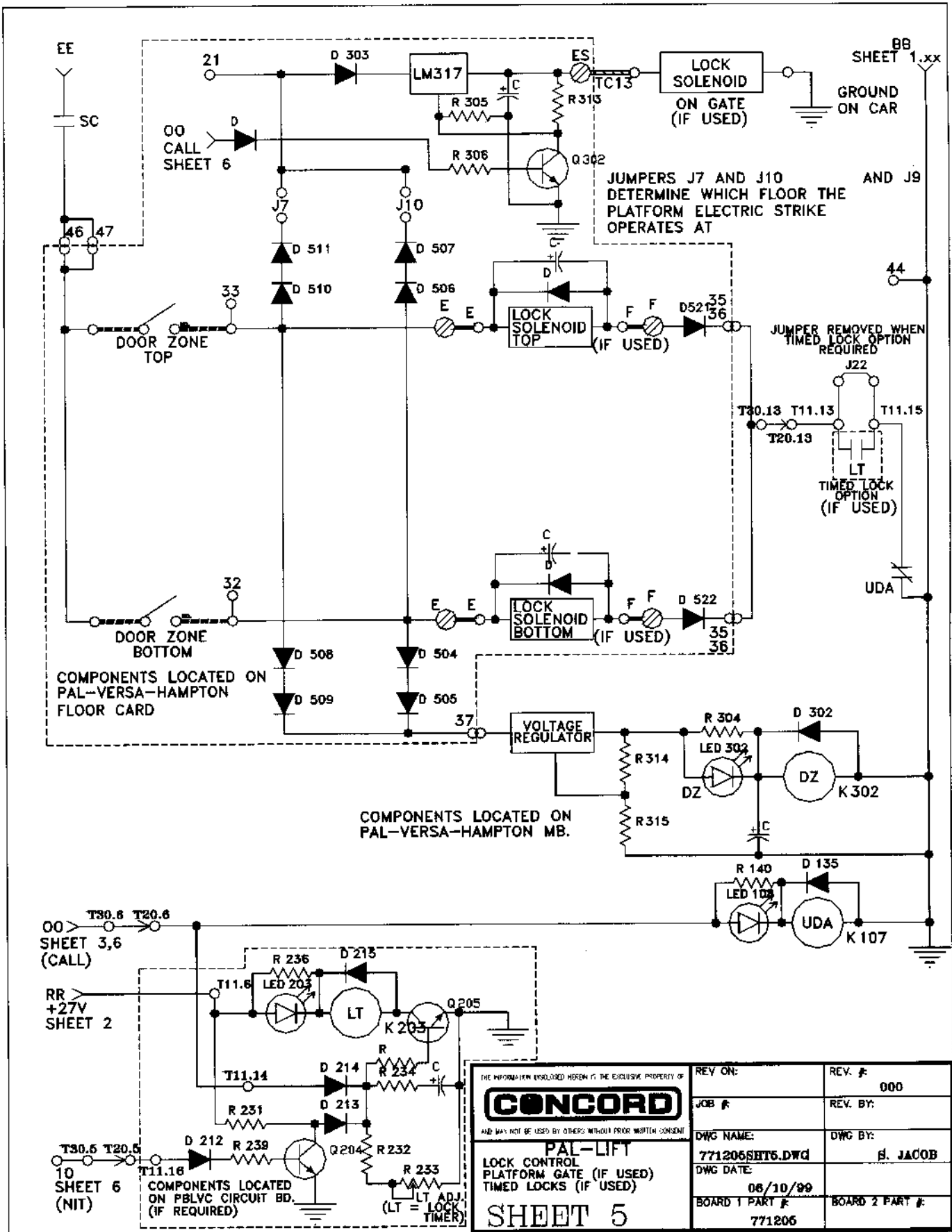
<small>THE INFORMATION DISCLOSED HEREIN IS THE EXCLUSIVE PROPERTY OF</small> CONCORD <small>AND MAY NOT BE USED BY OTHERS WITHOUT PRIOR WRITTEN CONSENT</small>	REV ONE	REV. #
	02/20/98	007
	JOB #	REV. BY:
		CBJ
	DWG NAME:	DWG BY:
	P8NP23_1	R.B.
	DWG DATE:	
	11/96	
	BOARD 1 PART #	BOARD 2 PART #

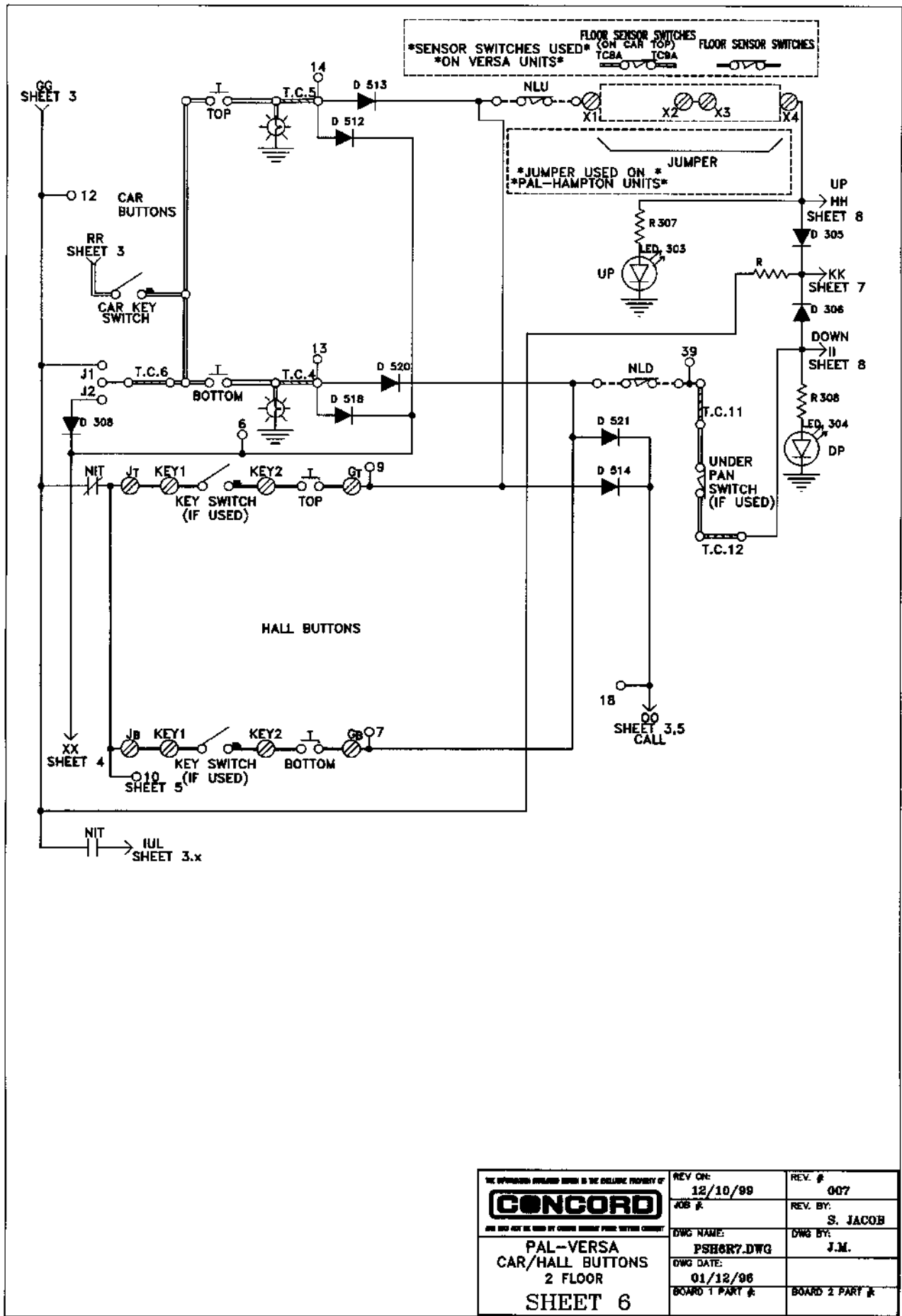
PAL LIFT
LVC AND STOP/ALARM
CIRCUITRY
SHEET 2

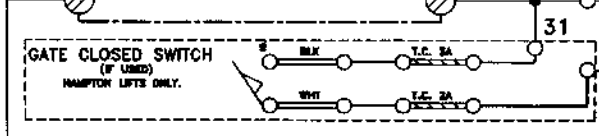
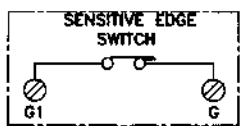
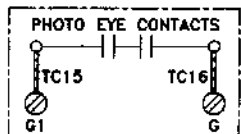
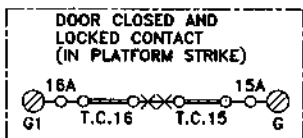


THE INFORMATION CONTAINED HEREIN IS THE SOLE PROPERTY OF CONCORD <small>AND MAY NOT BE USED BY OTHERS WITHOUT WRITTEN CONSENT</small>		REV. ON: 09/12/99	REV. #: 006
PAL/VERSA/HAMPTON RDC/SAFETY CIRCUIT		JOB #: 771140R6	REV. BY: GML
SHEET 3		DWG NAME: 771140R6	DWG BY: GML
		DWG DATE: 25/07/97	
		BOARD 1 PART #: 771140	BOARD 2 PART #: 771140

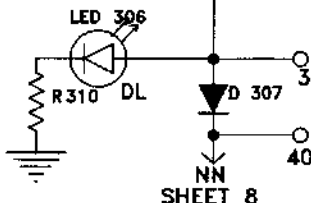
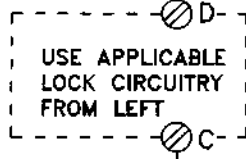
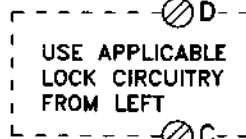
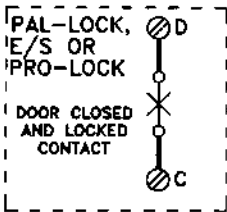
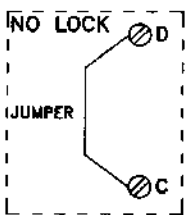




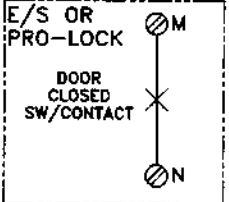
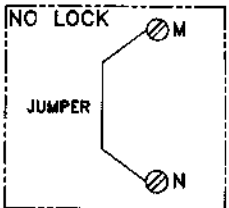
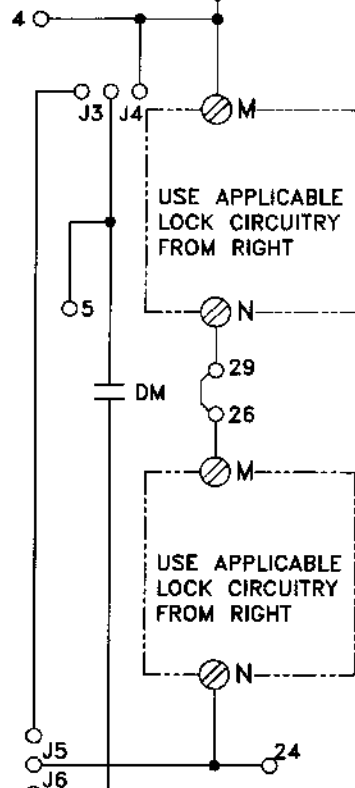




NORMALLY OPEN



SHEET 8



PAL-LOCK
 **NOTE: WHEN USING A COMBINATION LOCK CIRCUIT WITH PAL-LOCKS, A JUMPER IS NEEDED ACROSS THE M AND N SCREW TERMINALS, OTHERWISE JUST A SHUNT JUMPER IS NEEDED ON J4.

JUMPER SETTINGS

J5 J4	USED WITH COMBINATION OF LOCKS FOR D.C. CIRCUIT.
J3 J4	USED WITH PAL LOCKS ONLY
J5 J6	USED WITH COMBINATION OF LOCKS FOR D.C. CIRCUIT.
J5 J6	USED WHEN PAL LOCKS ARE NOT USED

THE INFORMATION CONTAINED HEREIN IS THE EXCLUSIVE PROPERTY OF

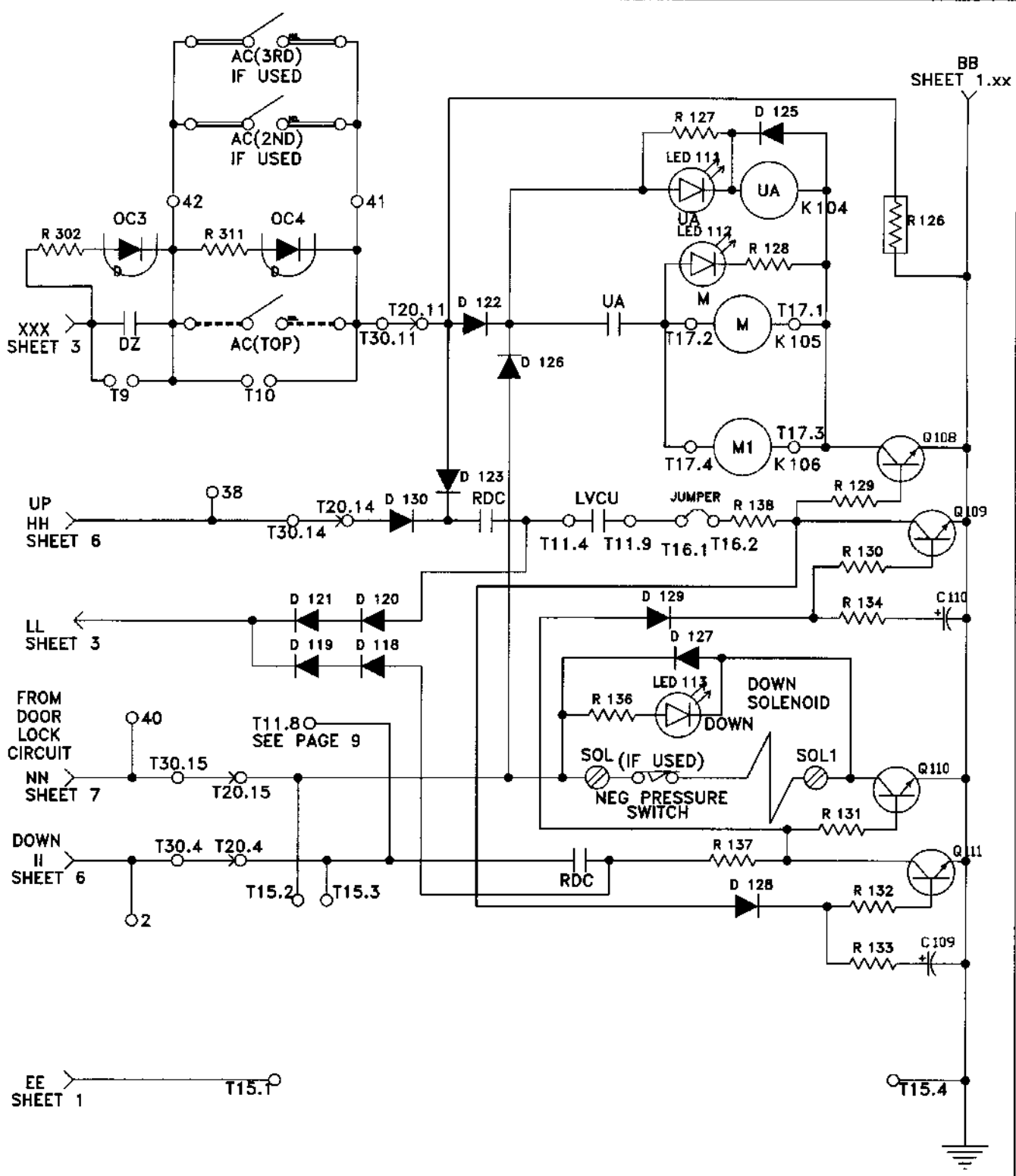
CONCORD

AND SHALL NOT BE USED BY OTHERS WITHOUT PRIOR WRITTEN CONSENT

REV. ON: 01/14/98	REV. # 004
JOB #:	REV. BY: CSJ
DWG. NAME: PALSPG7B	DWG. BY: R.B.
DWG. DATE: 08/23/97	
BOARD 1 PART #:	BOARD 2 PART #:

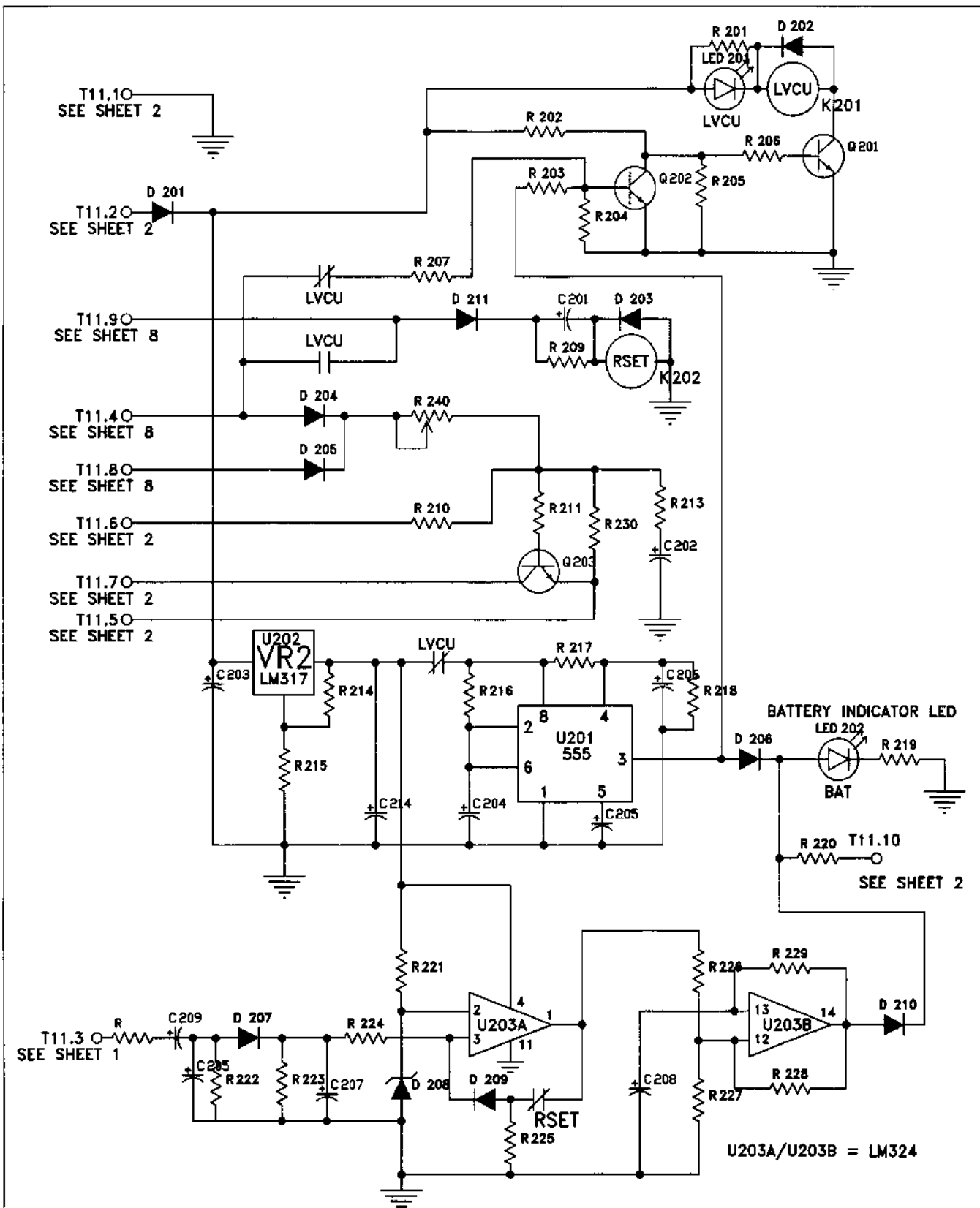
PAL/VERSA/HAMPTON LOCK CIRCUITRY

SHEET 7



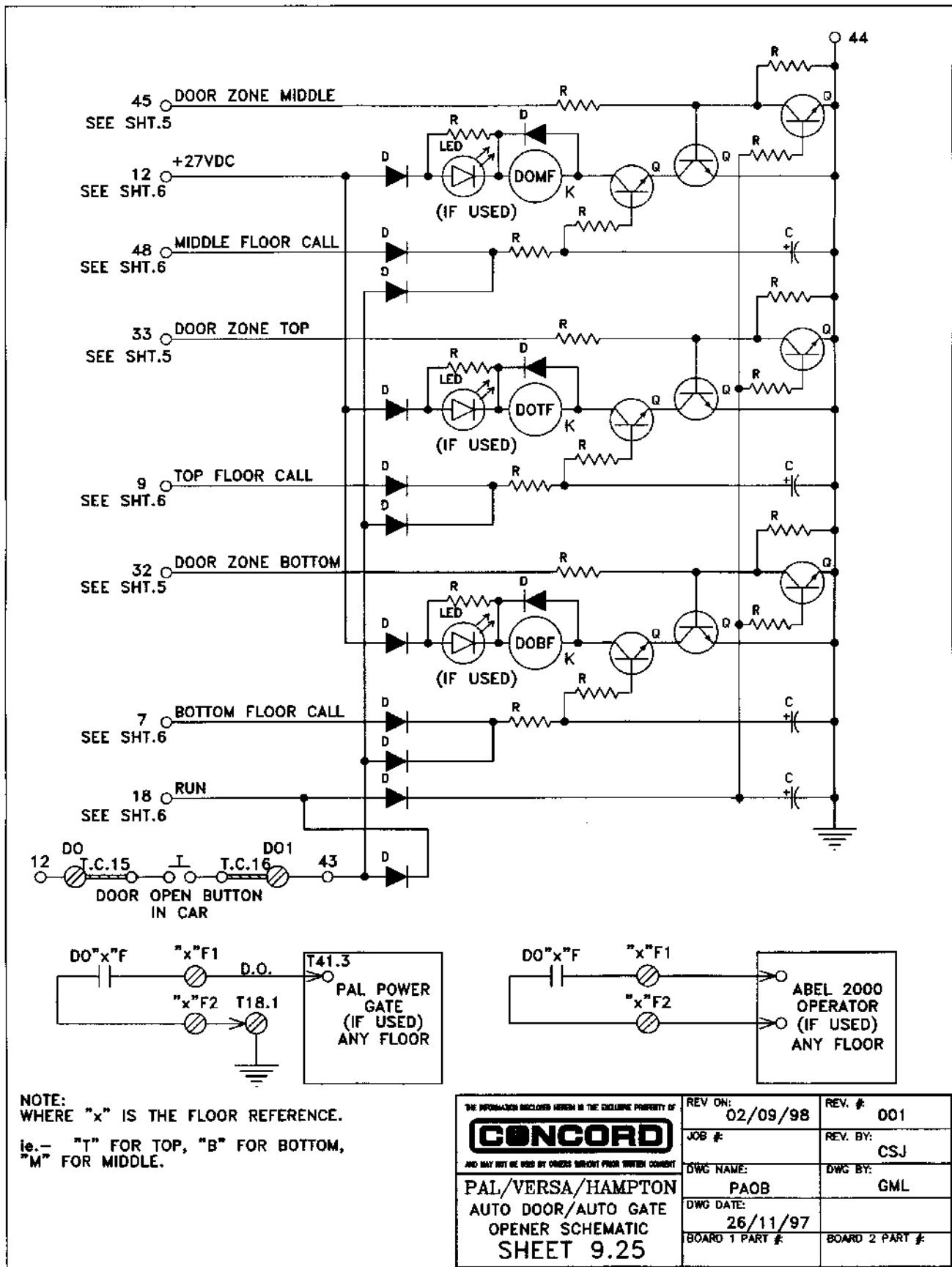
BB
SHEET 1.xx

<small>ALL INFORMATION CONTAINED HEREIN IS THE EXCLUSIVE PROPERTY OF</small> CONCORD <small>AND MAY NOT BE USED BY OTHERS WITHOUT WRITTEN CONSENT</small> PAL/VERSA/HAMPTON DRIVE COMPONENTS SHEET 8	REV. ON: 01/20/99	REV. # 006
	JOB #:	REV. BY: RKW
	DWG. NAME: P5NP78_1	DWG. BY: RB
	DWG. DATE: 03/96	
	BOARD 1 PART #	BOARD 2 PART #



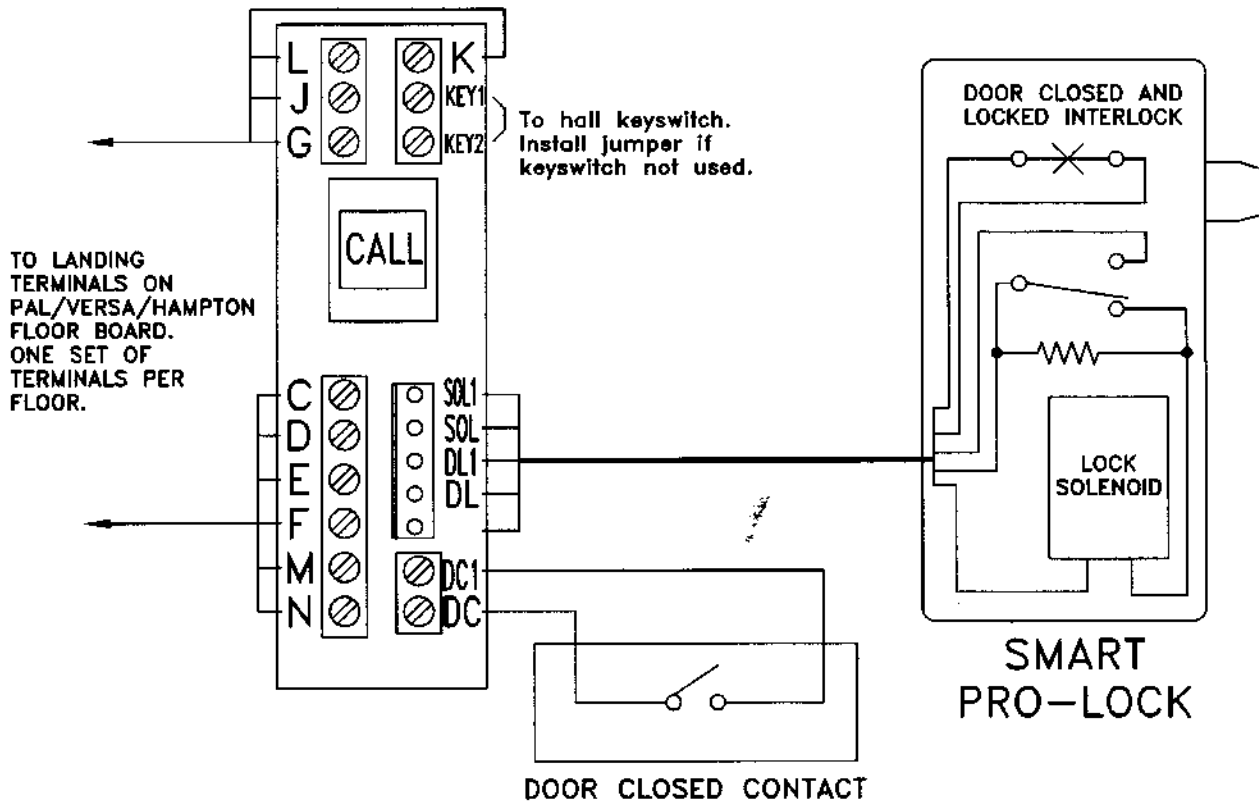
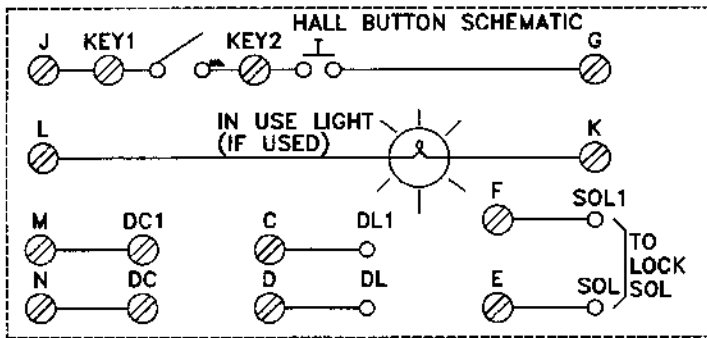
U203A/U203B = LM324

THE INFORMATION ENCLOSED HEREIN IS THE EXCLUSIVE PROPERTY OF CONCORD <small>AND MUST NOT BE USED BY OTHERS WITHOUT WRITTEN CONSENT</small> PAL/VERSA/HAMPTON BATTERY MONITOR CIRCUITRY PAL-LVC BOARD SHEET 9	REV. ON: 02/20/98	REV. # 004
	JOB #	REV. BY: CSJ
	DWG NAME: NPP9	DWG BY: JM
	DWG DATE: 02/13/96	
	BOARD 1 PART #	BOARD 2 PART #



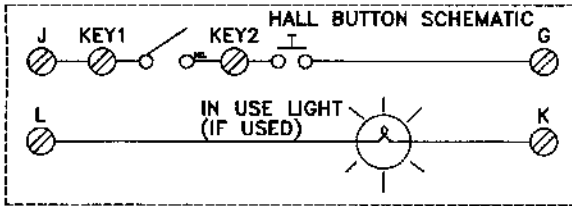
NOTE:
WHERE "x" IS THE FLOOR REFERENCE.
ie.- "T" FOR TOP, "B" FOR BOTTOM,
"M" FOR MIDDLE.

<small>THE INFORMATION ENCLOSED HEREIN IS THE EXCLUSIVE PROPERTY OF</small> CONCORD <small>AND MAY NOT BE USED BY OTHERS WITHOUT PRIOR WRITTEN CONSENT</small> PAL/VERSA/HAMPTON AUTO DOOR/AUTO GATE OPENER SCHEMATIC SHEET 9.25	REV ON: 02/09/98	REV. #: 001
	JOB #:	REV. BY: CSJ
	DWG NAME: PAOB	DWG BY: GML
	DWG DATE: 26/11/97	
	BOARD 1 PART #:	BOARD 2 PART #:



- M } DOOR CLOSED CONTACTS
- N } DOOR CLOSED CONTACTS
- C } DOOR CLOSED AND LOCKED INTERLOCK
- D } DOOR CLOSED AND LOCKED INTERLOCK
- J- HALL BUTTON COMMON
- G- HALL CALL SIGNAL
- E- LOCK SOLENOID SUPPLY
- F- LOCK SOLENOID RETURN
- L- INUSE LIGHT SIGNAL
- K- INUSE LIGHT SIGNAL RETURN
- KEY1,KEY2- KEYSWITCH TERMINALS
- DC,DC1- DOOR CLOSED CONTACT TERMINALS
- DL,DL1- DOOR LOCKED CONTACT TERMINALS

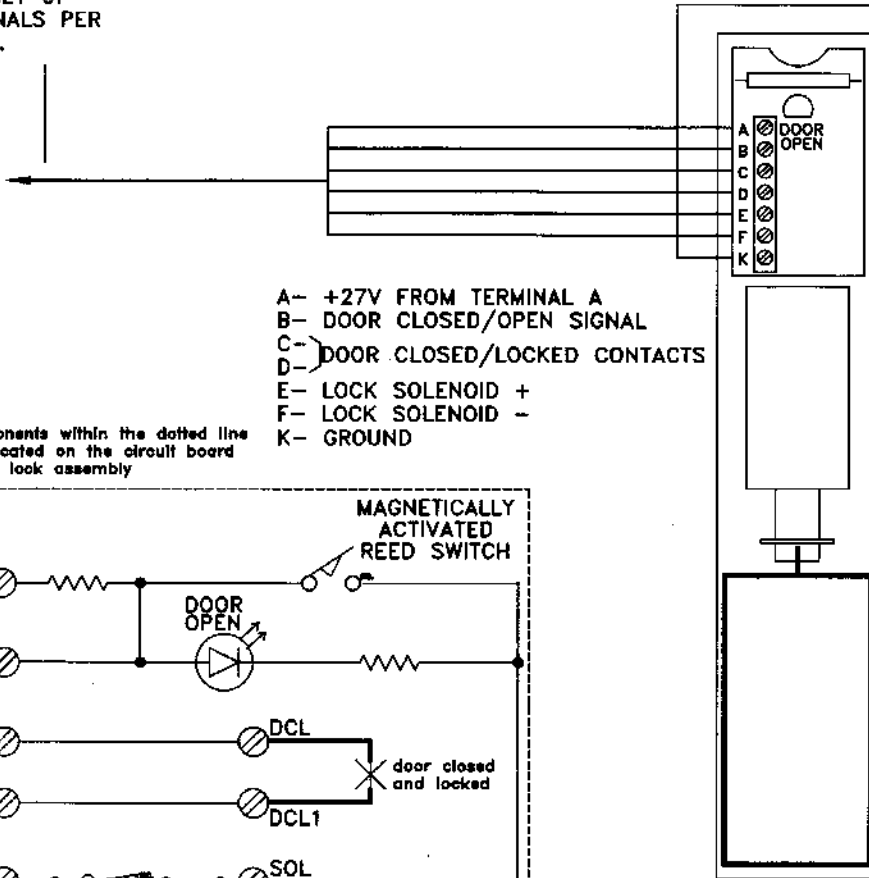
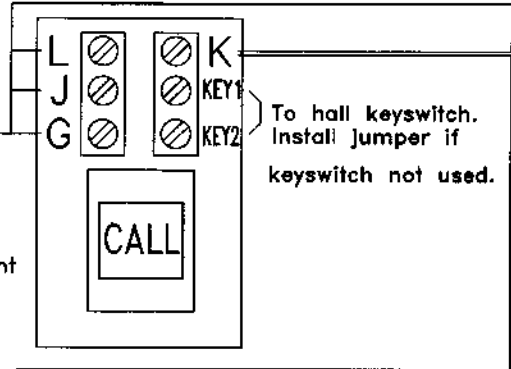
<small>NO INFORMATION SHOWN HEREIN IS THE SOLE PROPERTY OF</small> CONCORD <small>AND MAY NOT BE USED BY OTHERS WITHOUT WRITTEN CONSENT</small>	REV. ON:	REV. #:
	JOB #:	REV. BY:
	DWG NAME:	DWG BY:
	DWG DATE:	BOARD 1 PART #:
PAL/VERSA/HAMPTON HALL STATION WIRING PRO LOCK SHEET 10	06/10/99	000 S. JACOB
	BOARD 2 PART #:	



HALL CALL BUTTON

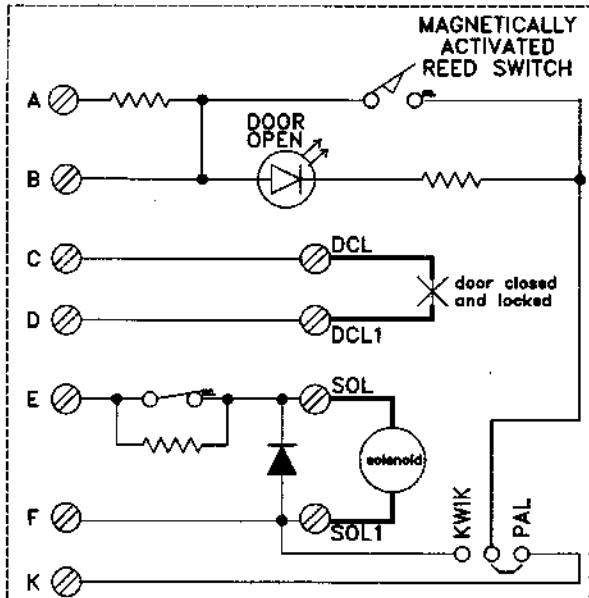
TO LANDING
TERMINALS ON
PAL/VERSA/HAMPTON
FLOOR BOARD.
ONE SET OF
TERMINALS PER
FLOOR.

- G- call signal
- J- button common
- K- ground
- L- +27VDC signal for inuse light

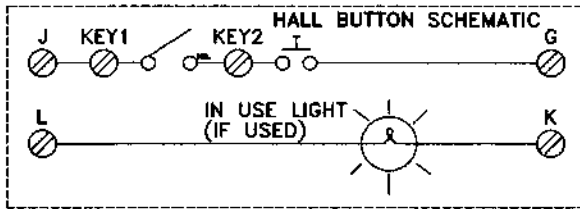


- A- +27V FROM TERMINAL A
- B- DOOR CLOSED/OPEN SIGNAL
- C- DOOR CLOSED/LOCKED CONTACTS
- D- DOOR CLOSED/LOCKED CONTACTS
- E- LOCK SOLENOID +
- F- LOCK SOLENOID -
- K- GROUND

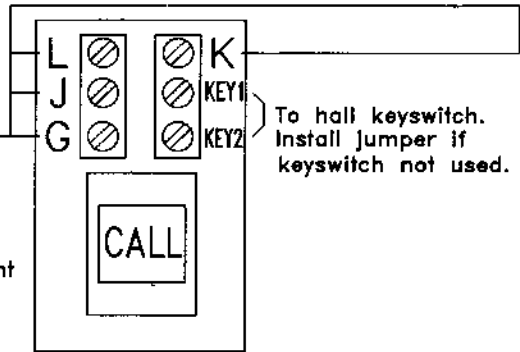
Components within the dotted line are located on the circuit board in the lock assembly



<small>THE INFORMATION CONTAINED HEREIN IS THE SOLE PROPERTY OF</small> CONCORD <small>AND MAY NOT BE USED BY ANYONE WITHOUT PRIOR WRITTEN CONSENT</small>	REV. ON:	REV. #:
	JOB #:	REV. BY:
	DWG NAME:	DWG BY:
	DWG DATE:	
PAL HALL STATION WIRING BOX-LOCK SHEET 10 NON US		S. JACOB BOARD 1 PART # BOARD 2 PART #

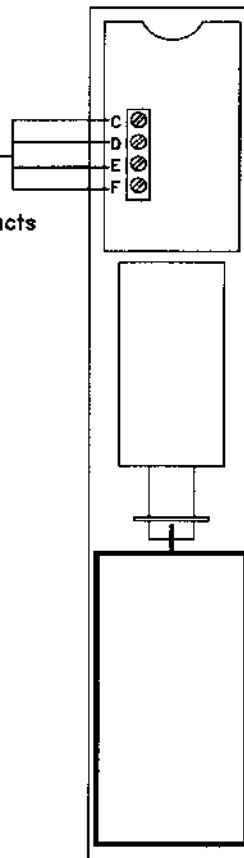


HALL CALL BUTTON



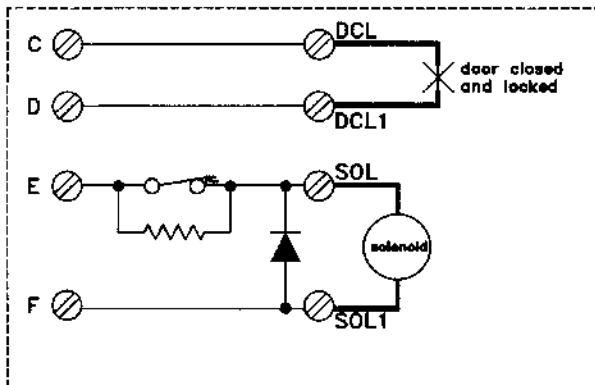
TO LANDING
TERMINALS ON
PAL/VERSA/HAMPTON
FLOOR BOARD.
ONE SET OF
TERMINALS PER
FLOOR.

- G- call signal
- J- button common
- K- ground
- L- +27VDC signal for Inuse light

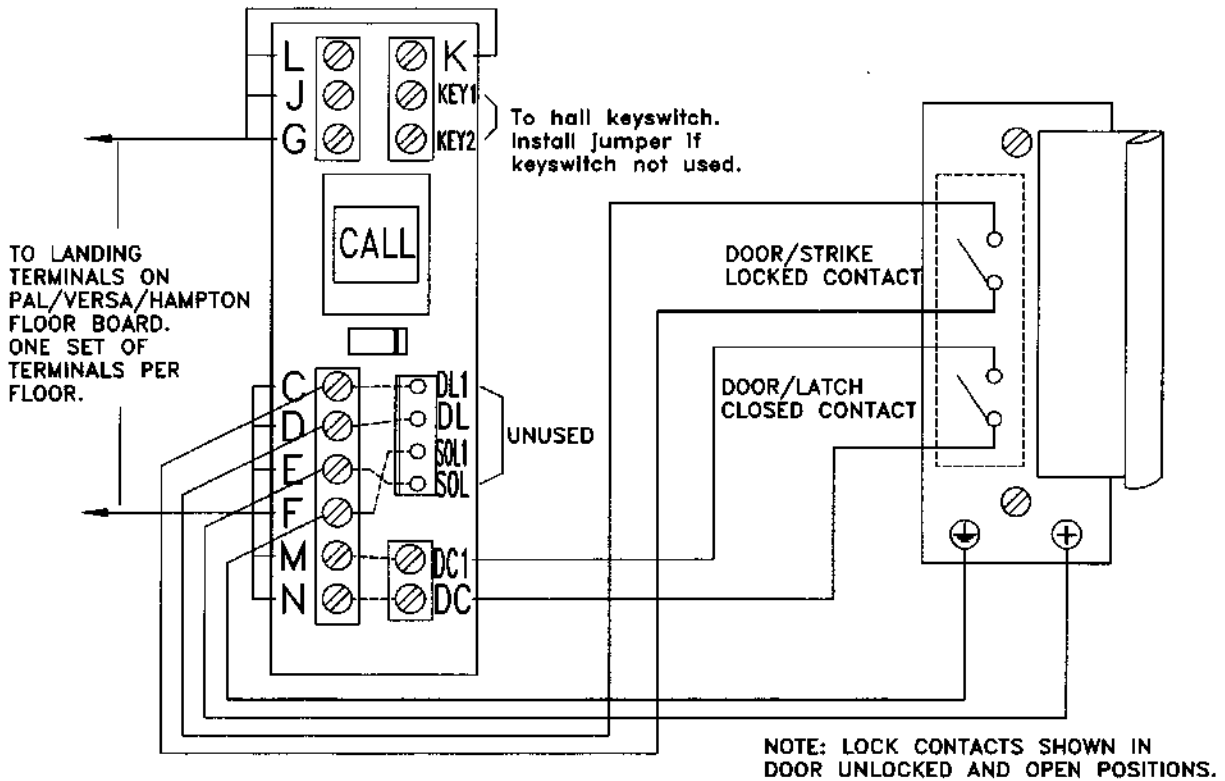
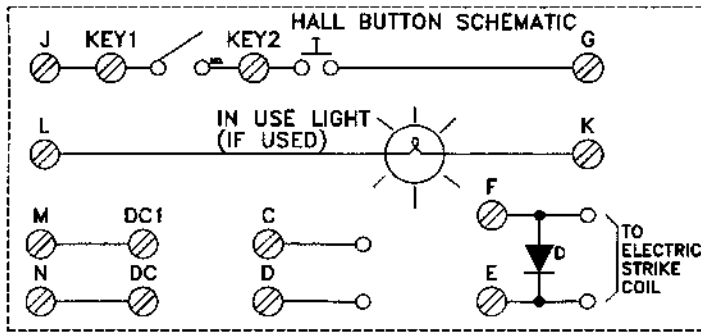


- C- } door closed/locked contacts
- D- }
- E- lock solenoid +
- F- lock solenoid -

Components within the dotted line
are located on the circuit board
in the lock assembly



THE INFORMATION ENCLOSED HEREIN IS THE EXCLUSIVE PROPERTY OF		REV ON:	REV. #
CONCORD		JOB #:	REV. BY:
		AND MAY NOT BE USED BY OTHERS WITHOUT PRIOR WRITTEN CONSENT	
PAL HALL STATION WIRING PAL LOCK SHEET 10.11 US ONLY		DWG NAME: 772008SHT10.DWG	DWG BY: S. JACOB
		DWG DATE: 06/10/99	
		BOARD 1 PART #:	BOARD 2 PART #:



- M } DOOR CLOSED CONTACTS
- N }
- C } DOOR CLOSED AND LOCKED INTERLOCK
- D }
- J- HALL BUTTON COMMON
- G- HALL CALL SIGNAL
- E- LOCK SOLENOID SUPPLY
- F- LOCK SOLENOID RETURN
- L- INUSE LIGHT SIGNAL
- K- INUSE LIGHT SIGNAL RETURN
- KEY1,KEY2- KEYSWITCH TERMINALS
- DC,DC1- DOOR CLOSED CONTACT TERMINALS

<small>THE INFORMATION CONTAINED HEREIN IS THE EXCLUSIVE PROPERTY OF</small> CONCORD <small>NO PART MAY BE REPRODUCED OR TRANSMITTED IN ANY FORM WITHOUT WRITTEN CONSENT</small>	REV. DATE: 03/03/98	REV. #: 003
	JOB #:	REV. BY: CSJ
	DWG. NAME: PALHSW	DWG. BY: J.M.
	DWG. DATE: 11/14/95	
	BOARD 1 PART #:	BOARD 2 PART #:
SHEET 10.3		

TOP HALL TERMINALS
ON PAL CONTROLLER
BOARD.

J_T ⊗
G_T ⊗

HALL KEYSWITCH
(IF USED)


BOTTOM HALL TERMINALS
ON PAL CONTROLLER
BOARD.

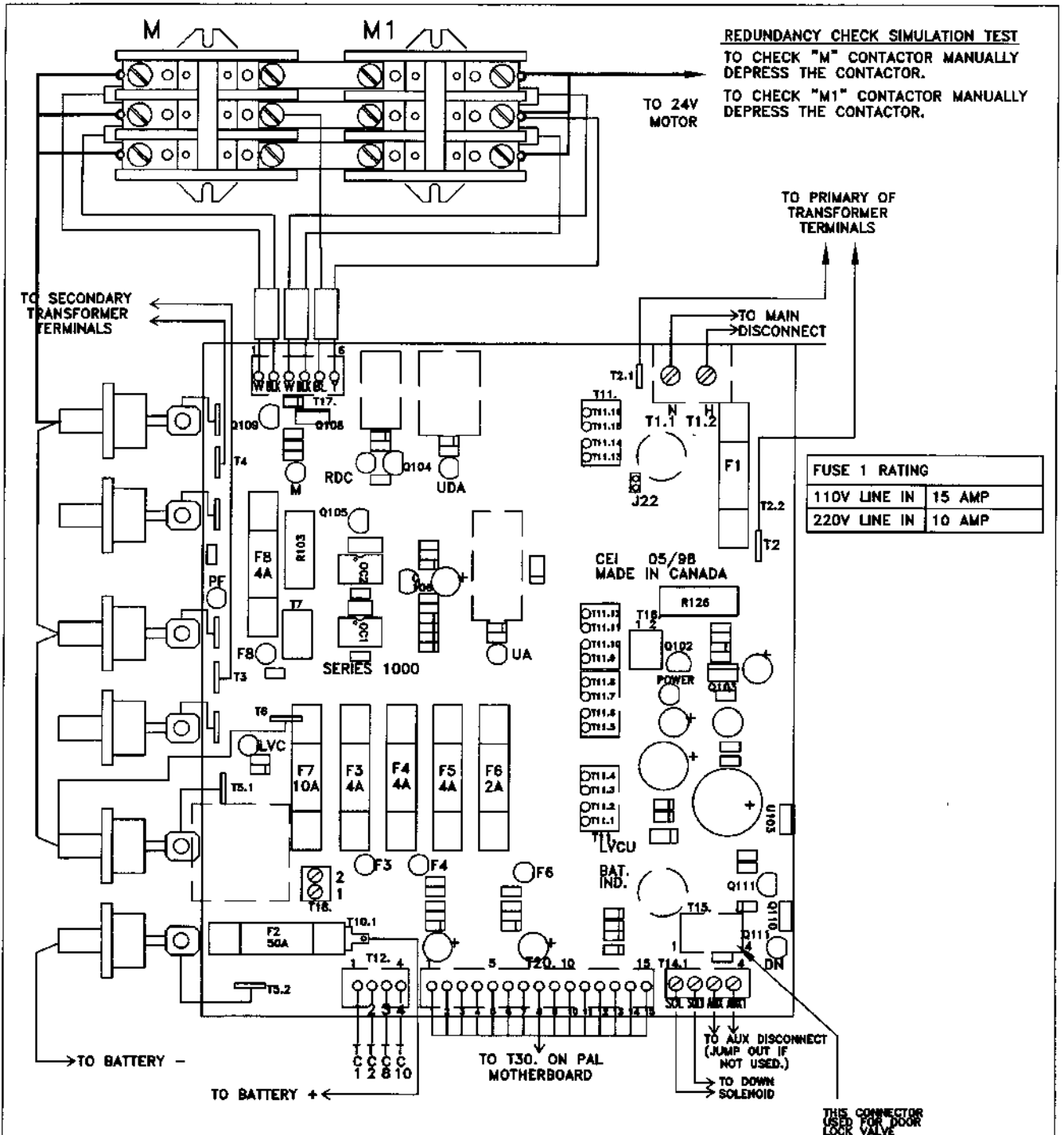
G_B ⊗
J_B ⊗

HALL KEYSWITCH
(IF USED)

NOTE:

IF LOCKS ARE USED, REFER TO OTHER HALL
STATION WIRING DIAGRAMS PROVIDED FOR LOCK
WIRING INFORMATION.

<small>THE INFORMATION ENCLOSED HEREIN IS THE EXCLUSIVE PROPERTY OF</small>  <small>AND MAY NOT BE REPRODUCED OR TRANSMITTED IN ANY FORM OR BY ANY MEANS WITHOUT WRITTEN PERMISSION</small>	REV. ON: 07/03/97	REV. # 002
	JOB #:	REV. BY: RB
PAL/VERSA LIFT CALL/SEND WIRING DIA. FOR ROCKER SWITCHES SHEET 10.51	DWG NAME: PPHALLCS	DWG BY: JM
	DWG DATE: NOV 4/93	
	BOARD 1 PART #:	BOARD 2 PART #:



PART NUMBER	DESCRIPTION
P.N.771205-110	110V (STANDARD)
P.N.771205-220	220V (STANDARD)
P.N.771205-117	110V (C/W F7)
P.N.771205-227	220V (C/W F7)
P.N.771205-118	110V (C/W F8)
P.N.771205-228	220V (C/W F8)

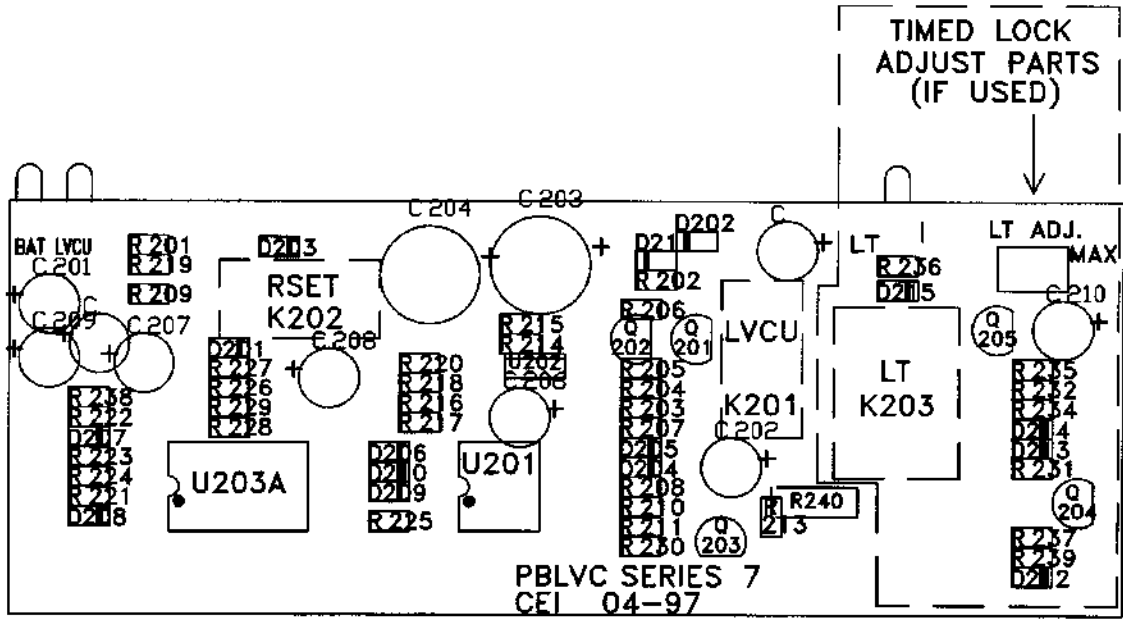
THE INFORMATION PROVIDED HEREIN IS THE SOLE PROPERTY OF

CONCORD

AND MAY NOT BE USED BY OTHERS WITHOUT WRITTEN CONSENT

SERIES 1000
POWER SUPPLY WIRING
DIAGRAM
SHEET 11

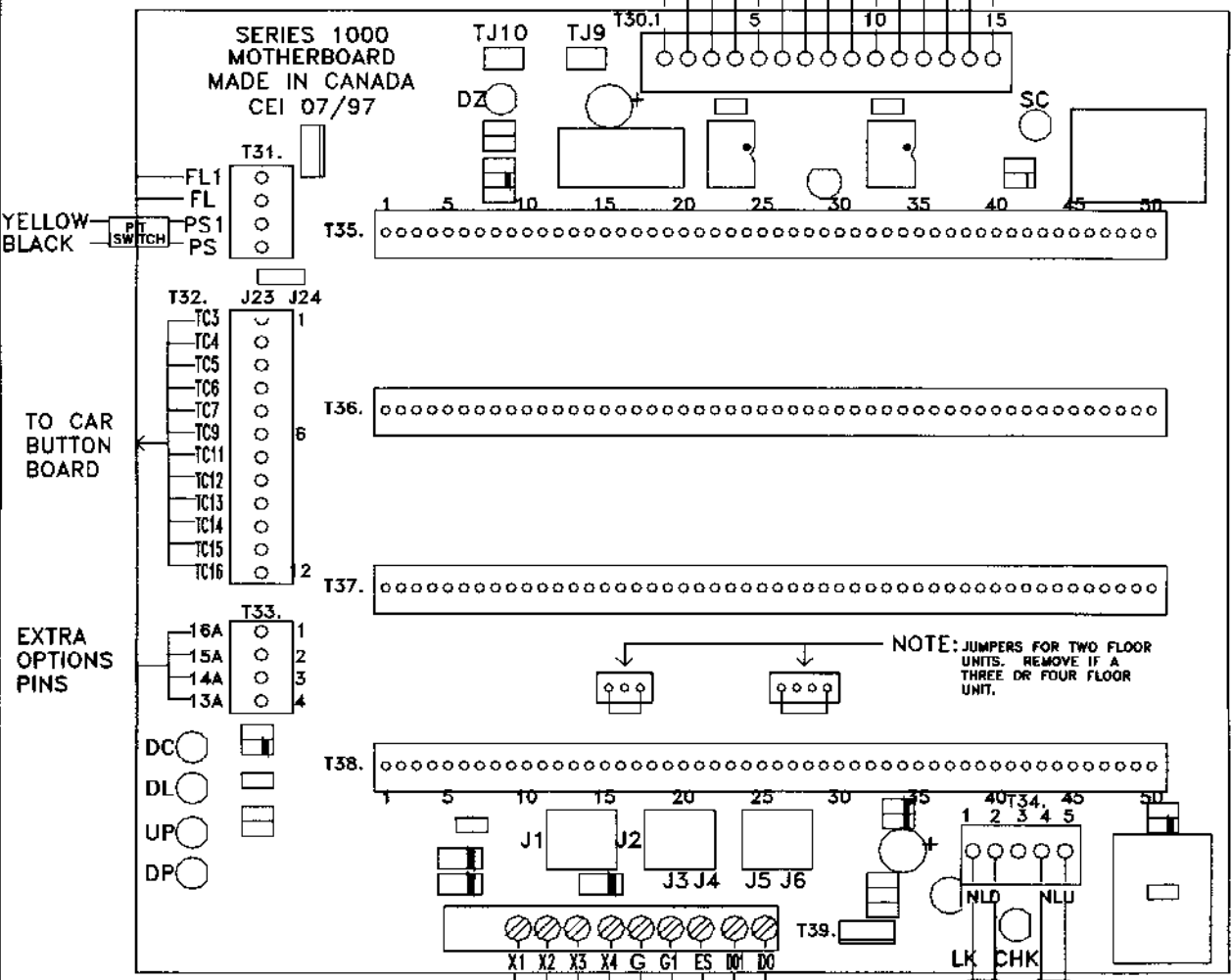
REV. ON:	REV. #
JOB #:	000
DWG NAME:	REV. BY:
771205SHT11.DWG	S. JACOB
DWG DATE:	
06/10/99	
BOARD 1 PART #:	BOARD 2 PART #:
771205	



PART NUMBER	DESCRIPTION
P.N.771138	PBLVC (STANDARD)
P.N.771139	PBLVC (C/W TIMED LOCK OPTION)

<small>THE INFORMATION DISCLOSED HEREIN IS THE EXCLUSIVE PROPERTY OF</small> CONCORD <small>AND MAY NOT BE USED BY OTHERS WITHOUT PRIOR WRITTEN CONSENT</small> PAL/VERSA/HAMPTON PBLVC SERIES 7 SHEET 11.1	REV ON: 02/11/98	REV. #: 001
	JOB #:	REV. BY: CSJ
	DWG NAME: PPLVC7	DWG BY: JM
	DWG DATE:	
	BOARD 1 PART #:	BOARD 2 PART #:

PART #	BOARD DESCRIPTION/OPTIONS
771071	PCB_MB 2FL STD SERIES 1000
771172	PCB_MB 2FL W/DO or 3FL STD SER 1000
771174	PCB_MB 3FL W/DO or 4FL STD SER 1000
771151	PCB_MB 2FL W/GT SER 1000
771173	PCB_MB 2FL W/GT+DO or 3FL W/GT SER 1000
771175	PCB_MB 3FL W/GT+DO or 4FL W/GT SER 1000
771140	C/W DOOR CHECK CIRCUITRY
771152	C/W PLATFORMGATE & DOOR CHECK CIRCUITRY



JUMPER SETTINGS

J1 J2	USED W/O CAR KEY SWITCH
J1 J2	USED WITH CAR KEY SWITCH
J3 J4	USED WITH COMBINATION OF LOCKS FOR D.C. CIRCUIT.
J3 J4	USED WITH PAL LOCKS ONLY
J5 J6	USED WITH COMBINATION OF LOCKS FOR D.C. CIRCUIT.
J5 J6	USED WHEN PAL LOCKS ARE NOT USED

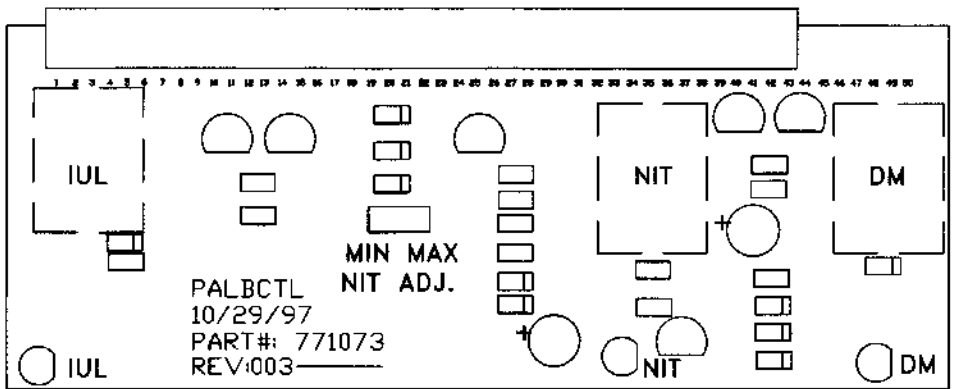
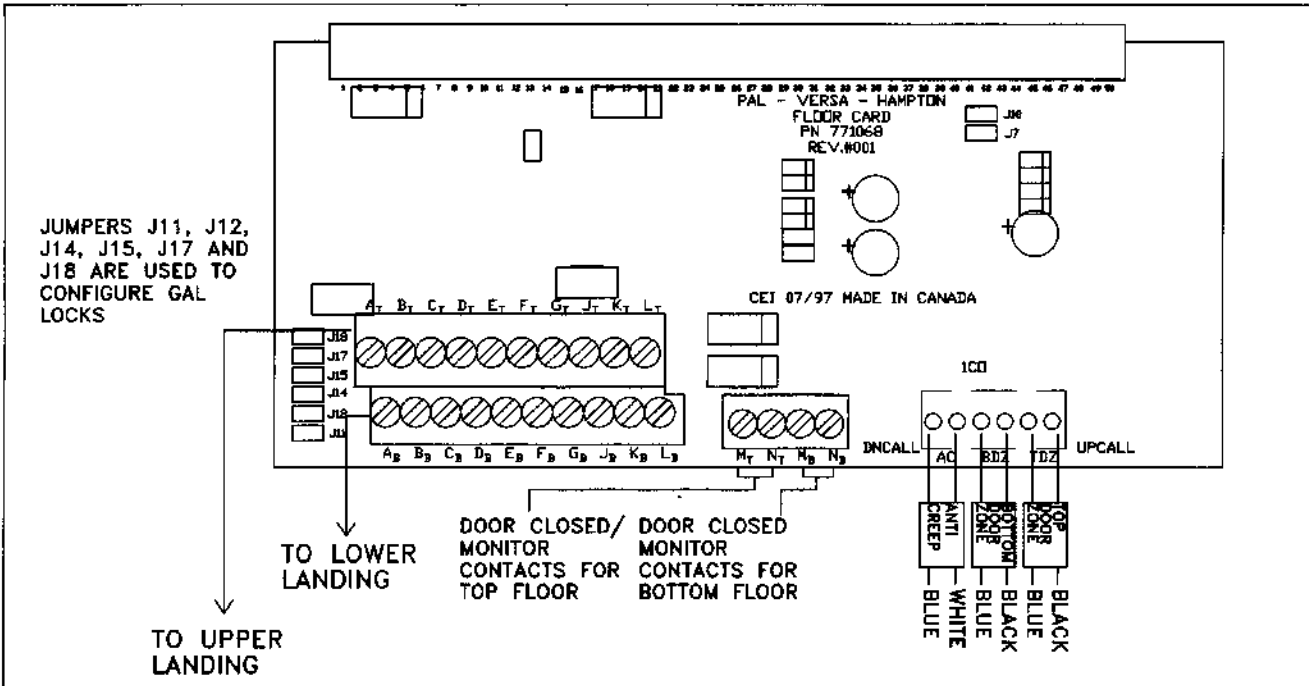
REDUNDANCY CHECK SIMULATION TEST POINTS

TJ9	INSTALL JUMPER TO CHECK DZ* CONTACTS
TJ10	INSTALL JUMPER TO CHECK AC* CONTACTS
J23 J24	FACTORY SET

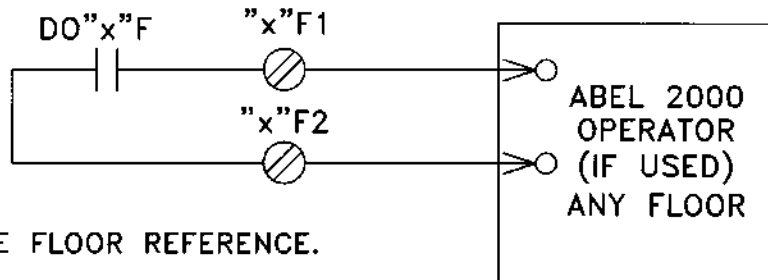
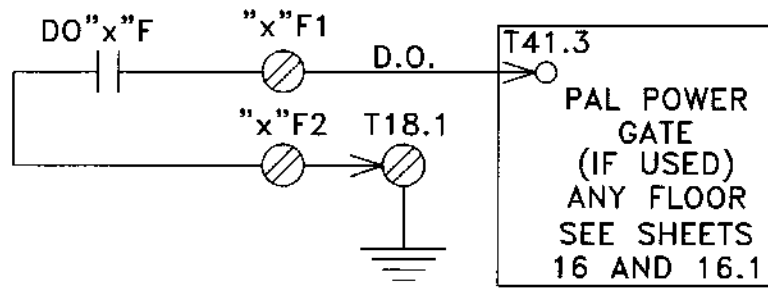
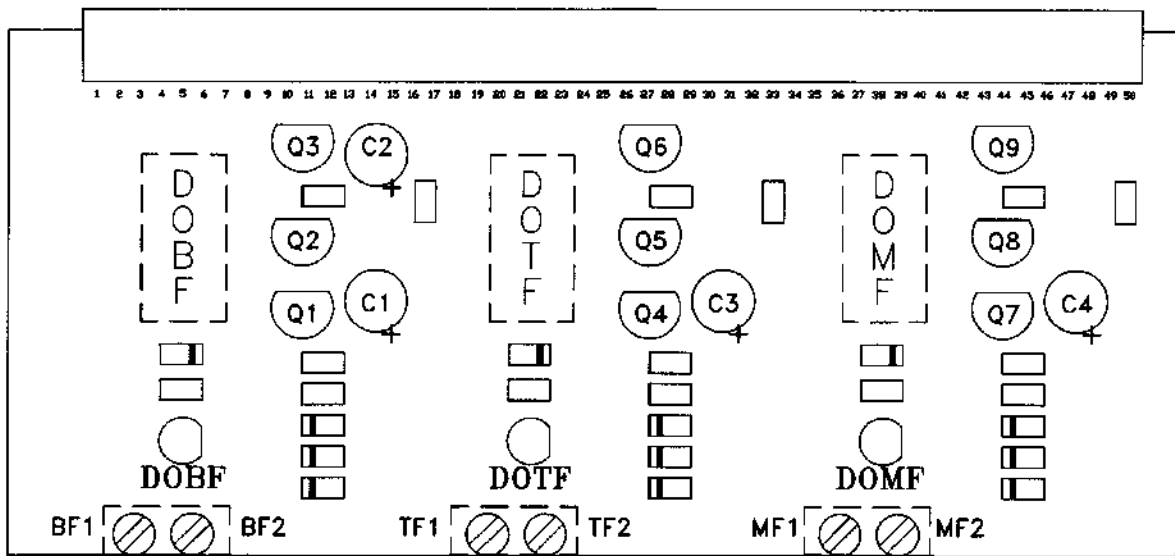
FLOOR SENSOR SWITCHES. INSTALL JUMPER FROM J1 TO J4 IF NONE USED.
 PLATFORM GATE LOCK CONTACTS. INSTALL JUMPER IF NO GATE IS USED.
 PLATFORM GATE LOCK SUPPLY.
 DOOR OPEN BUTTON CONTACTS.

NORMAL LIMIT DOWN: GREEN, RED
 NORMAL LIMIT: WHITE, BLACK

<p>THE INFORMATION DISCLOSED HEREIN IS THE EXCLUSIVE PROPERTY OF</p> <p>CONCORD</p> <p>AND MAY NOT BE USED BY OTHERS WITHOUT PRIOR WRITTEN CONSENT.</p> <p>SERIES 1000 MOTHERBOARD WIRING DIAGRAM SHEET 12.1</p>	REV ON: 09/08/98	REV. #: 004
	JOB #:	REV. BY: RKW
	DWG NAME: PPVH_MBD	DWG BY: GML
	DWG DATE: 09/29/97	
	BOARD 1 PART #:	BOARD 2 PART #:




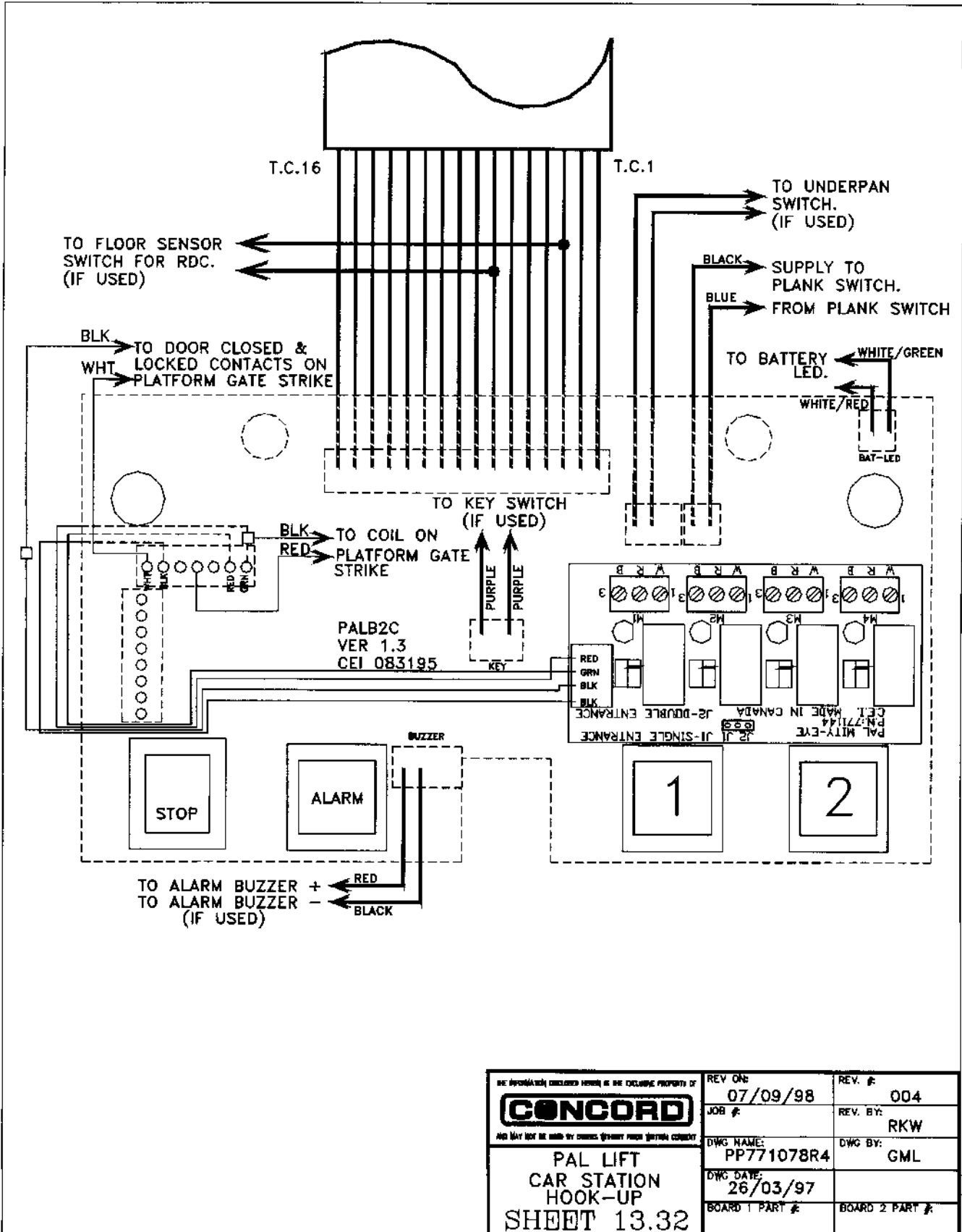
THE INFORMATION DISCLOSED HEREIN IS THE EXCLUSIVE PROPERTY OF CONCORD AND MAY NOT BE USED BY OTHERS WITHOUT PRIOR WRITTEN CONSENT PAL/VERSA PLUG IN CARDS WIRING CONNECTIONS SHEET 13	REV. ON: 02/11/98	REV. #: 004
	JOB #:	REV. BY: CSJ
	DWG NAME: PALBTB-1	DWG BY: RB
	DWG DATE: 02/14/96	
	BOARD 1 PART #:	BOARD 2 PART #:



NOTE:
WHERE "x" IS THE FLOOR REFERENCE.

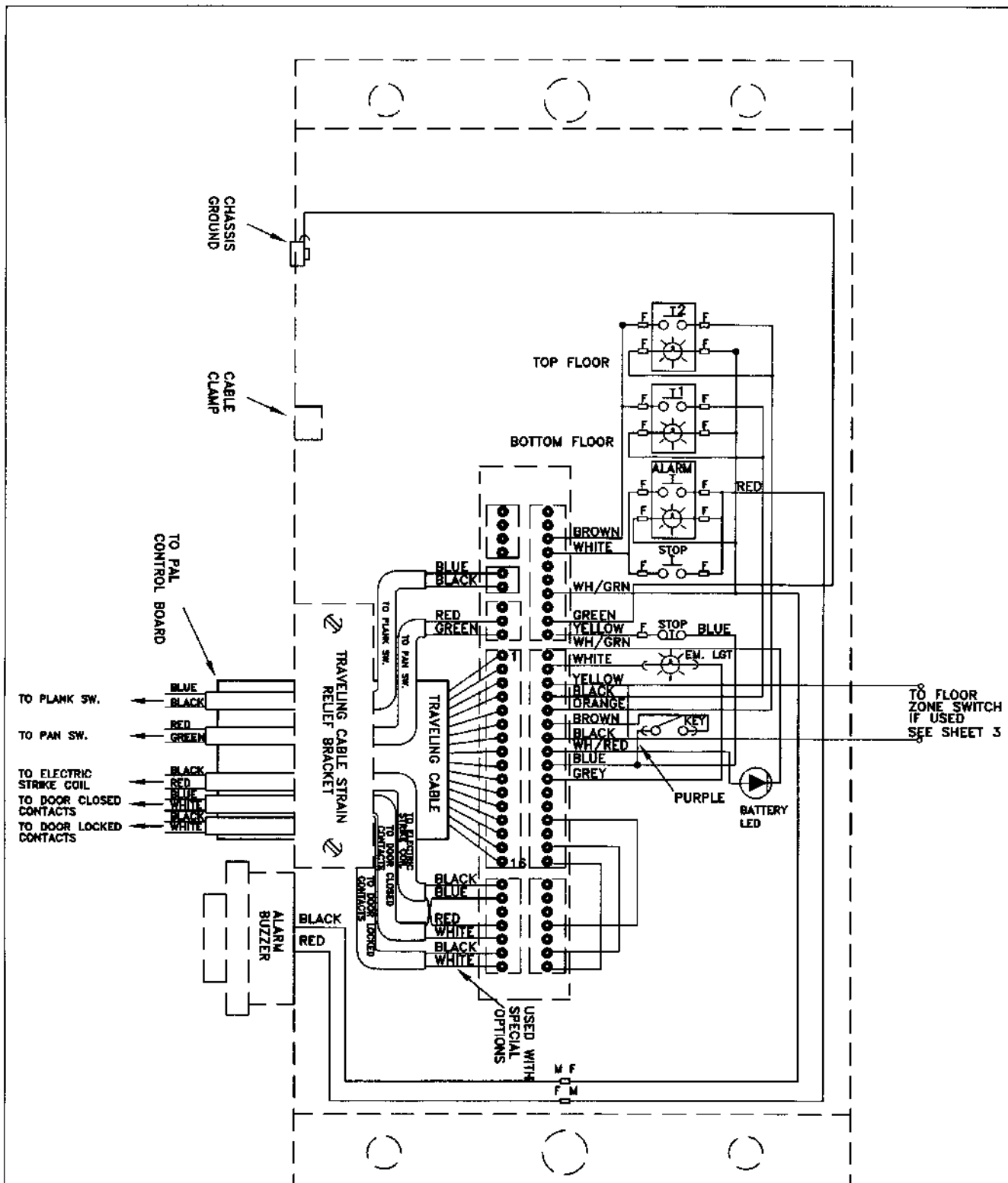
ie.- "T" FOR TOP, "B" FOR BOTTOM,
"M" FOR MIDDLE.

THE INFORMATION DISCLOSED HEREIN IS THE EXCLUSIVE PROPERTY OF  AND MAY NOT BE USED BY OTHERS WITHOUT PRIOR WRITTEN CONSENT PAL-VERSA-HAMPTON WIRING DIAGRAM FOR PBD02 SHEET 13.1	REV ON: 02/11/98	REV. #: 001
	JOB #:	REV. BY: CSJ
	DWG NAME: PPD02	DWG BY: RB
	DWG DATE: 02/96	
	BOARD 1 PART #:	BOARD 2 PART #:



THE INFORMATION CONTAINED HEREIN IS THE EXCLUSIVE PROPERTY OF CONCORD AND MAY NOT BE USED BY OTHERS WITHOUT EXPRESS WRITTEN CONSENT.	REV. DATE: 07/09/98	REV. #: 004
	JOB #:	REV. BY: RKW
	DWG. NAME: PP771078R4	DWG. BY: GML
	DWG. DATE: 26/03/97	
	BOARD 1 PART #:	BOARD 2 PART #:

PAL LIFT
 CAR STATION
 HOOK-UP
 SHEET 13.32



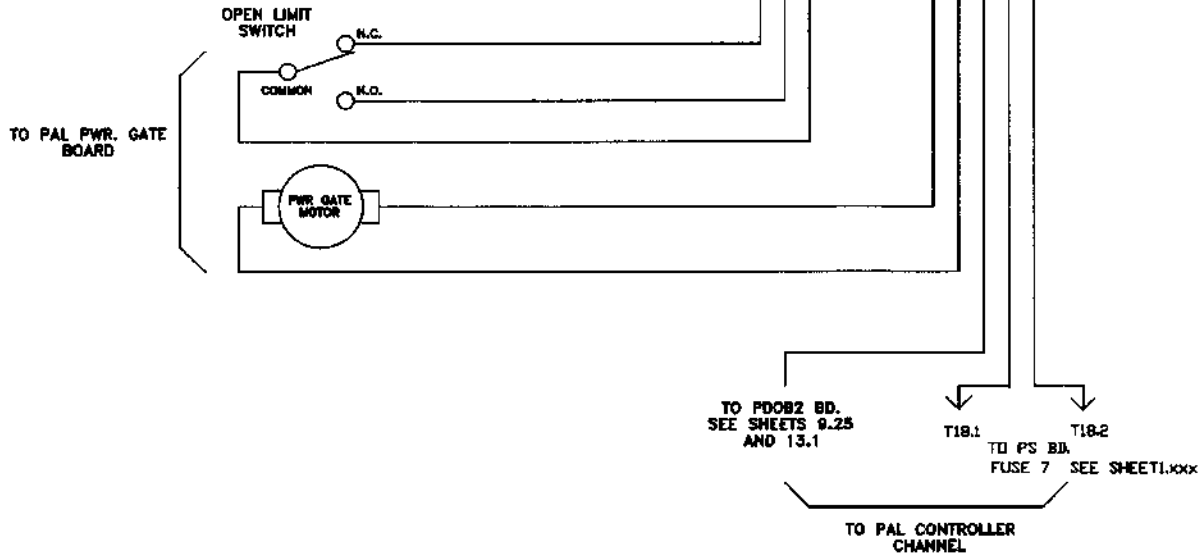
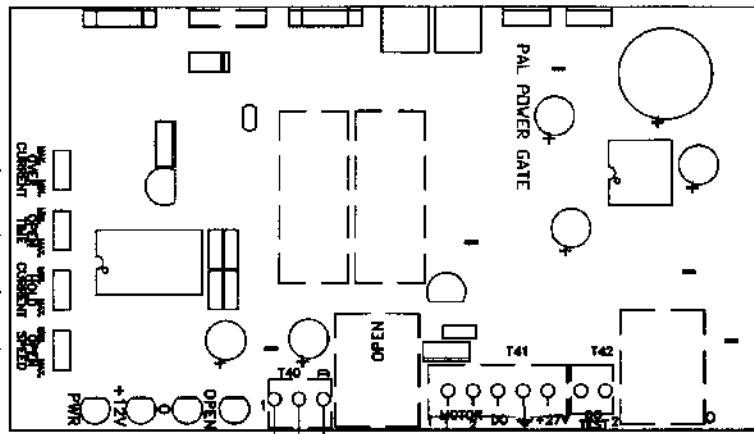
<small>THE INFORMATION CONTAINED HEREIN IS THE SOLE PROPERTY OF</small> CONCORD <small>AND MAY NOT BE USED BY OTHERS WITHOUT PRIOR WRITTEN CONSENT</small>		REV. ON: 03/07/00	REV. #: 002
		JOB #: _____	REV. BY: R. Witzell
		DWG. NAME: PPCONT2FL	DWG. BY: JM
		DWG. DATE: 08/06/94	
		BOARD 1 PART #: _____	BOARD 2 PART #: _____


OVER CURRENT
ADJUSTS THE LEVEL OF SENSITIVITY TO OBSTRUCTIONS DURING THE GATE OPEN PHASE.

OPEN TIME
ADJUSTS THE AMOUNT OF TIME THE AUTO GATE WILL REMAIN OPEN.

HOLD CURRENT
ADJUSTS THE AMOUNT OF POWER AVAILABLE FOR THE MOTOR TO HOLD THE AUTO GATE DOOR IN A STABLE POSITION ONCE THE GATE HAS ACTIVATED THE OPEN LIMIT SWITCH.

OPEN SPEED
ADJUSTS THE SPEED AT WHICH THE AUTO GATE OPENS.



<small>THE INFORMATION DISCLOSED HEREIN IS THE SOLE PROPERTY OF</small>  <small>AND MAY NOT BE USED BY OTHERS WITHOUT PRIOR WRITTEN CONSENT</small>		REV ON: 05/28/98	REV. #: 001
		JOB #: 	REV. BY: RKV
		DWG NAME: PALAUTOGATE1	DWG BY: CSJ
		DWG DATE: 03/20/98	
		BOARD 1 PART #: 	BOARD 2 PART #:
PAL-LIFT AUTO GATE BD. WIRING SUPPLEMENTAL SHEET 16.3			

